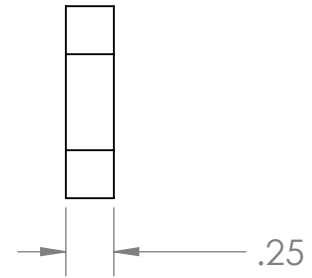
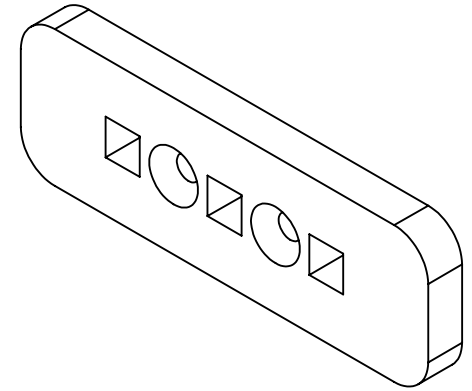
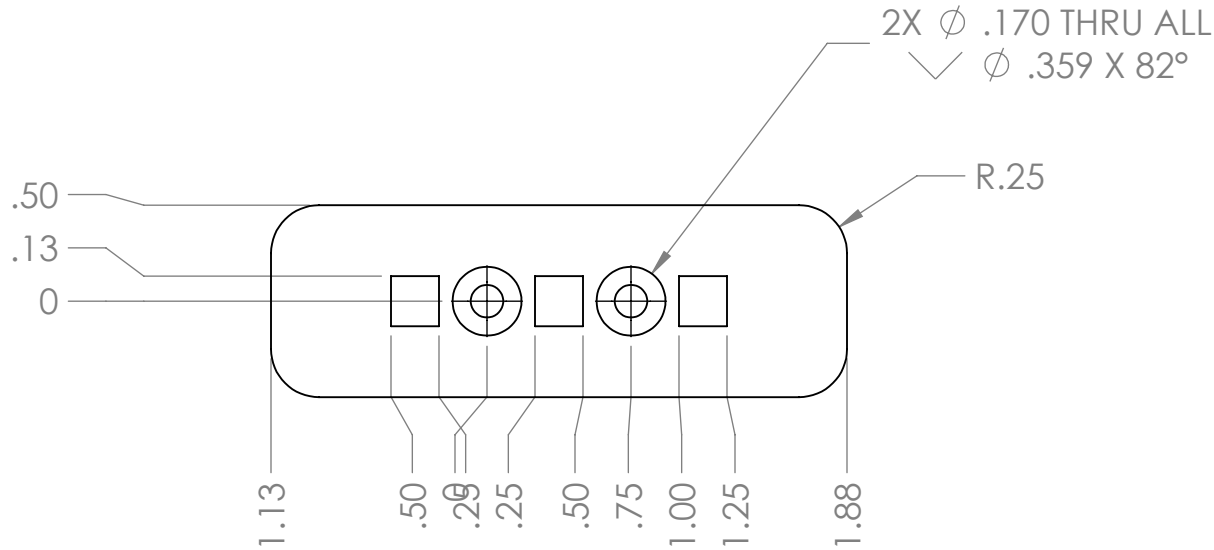


SIZE
A



REMOVE BURRS & SHARP EDGES

UNLESS OTHERWISE SPECIFIED:
DIMENSIONS ARE IN INCHES

TOLERANCES:
FRACTIONAL $\pm 1/32$ "
ANGULAR: MACH $\pm 2^\circ$ BEND: $\pm 1/16$ "
TWO PLACE DECIMAL ± 0.020 "
THREE PLACE DECIMAL ± 0.005 "

NUT HOLE FOR EXPO

DESCRIPTION

PART NO.

GROUP

ENGINEER

SHAWN WRIGHT

DRAWN BY

DATE

MATERIAL WEIGHT

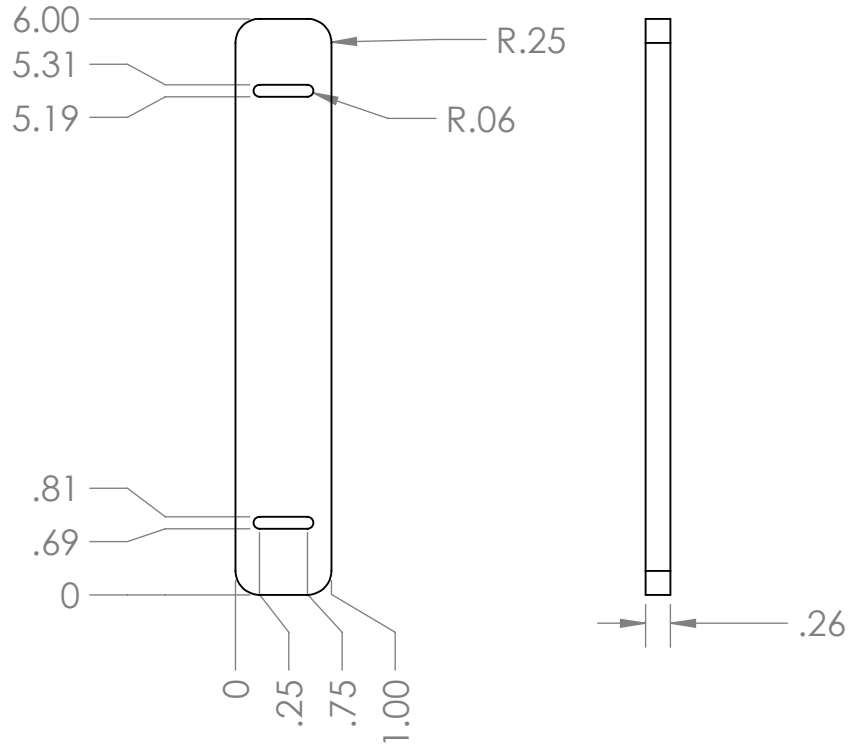
1:1

SCALE REV.

H:\ME_450\Linear Book Scanner\Fastener Example\

FILE PATH

SIZE
A



REMOVE BURRS & SHARP EDGES

UNLESS OTHERWISE SPECIFIED:
DIMENSIONS ARE IN INCHES

TOLERANCES:
FRACTIONAL $\pm 1/32"$
ANGULAR: MACH $\pm 2^\circ$ BEND: $\pm 1/16"$
TWO PLACE DECIMAL $\pm 0.020"$
THREE PLACE DECIMAL $\pm 0.005"$

Base Spacer

DESCRIPTION

PART NO.

GROUP

ENGINEER

SHAWN WRIGHT

DRAWN BY

DATE

MATERIAL WEIGHT

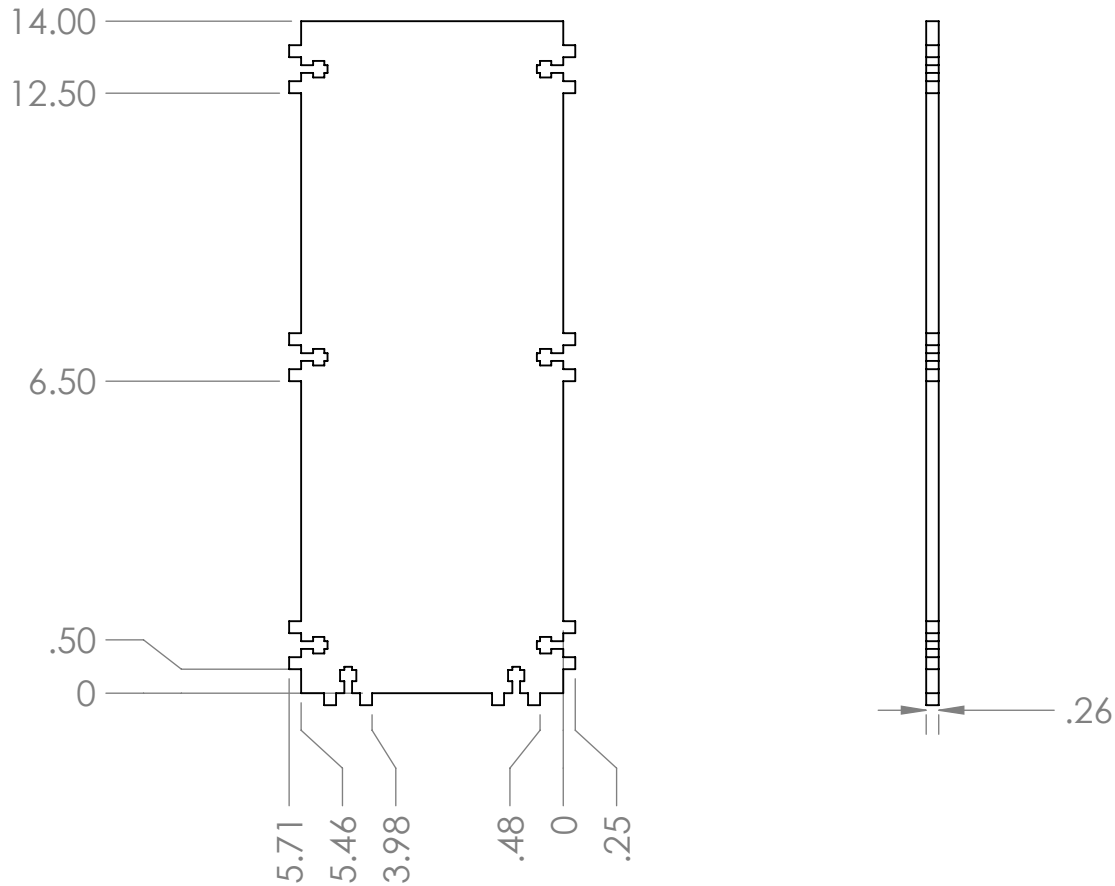
1:2

SCALE REV.

H:\ME_450\Linear Book Scanner\Base\

FILE PATH

SIZE
A



REMOVE BURRS & SHARP EDGES

UNLESS OTHERWISE SPECIFIED:
DIMENSIONS ARE IN INCHES

TOLERANCES:
 FRACTIONAL $\pm 1/32"$
 ANGULAR: MACH $\pm 2^\circ$ BEND: $\pm 1/16"$
 TWO PLACE DECIMAL $\pm 0.020"$
 THREE PLACE DECIMAL $\pm 0.005"$

BASE, ELECTRONICS SLIDE

DESCRIPTION

PART NO.

GROUP

ENGINEER

SHAWN WRIGHT

DRAWN BY

DATE

MATERIAL WEIGHT

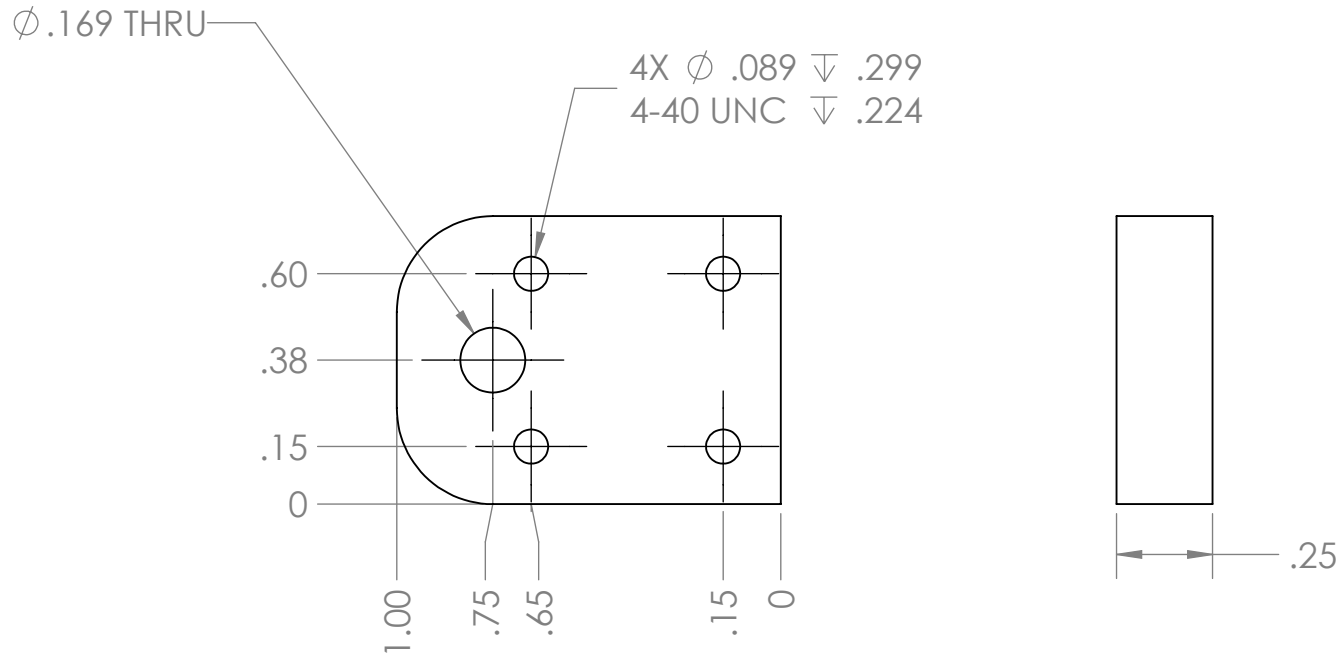
1:4

REV.

H:\ME_450\Linear Book Scanner\Electronics Slide\

FILE PATH

SIZE
A



REMOVE BURRS & SHARP EDGES

UNLESS OTHERWISE SPECIFIED:
DIMENSIONS ARE IN INCHES

TOLERANCES:
 FRACTIONAL $\pm 1/32"$
 ANGULAR: MACH $\pm 2^\circ$ BEND: $\pm 1/16"$
 TWO PLACE DECIMAL $\pm 0.020"$
 THREE PLACE DECIMAL $\pm 0.005"$

BELT MOUNT LOWER, SADDLE

DESCRIPTION

PART NO.

GROUP

ENGINEER

SHAWN WRIGHT

DRAWN BY

DATE

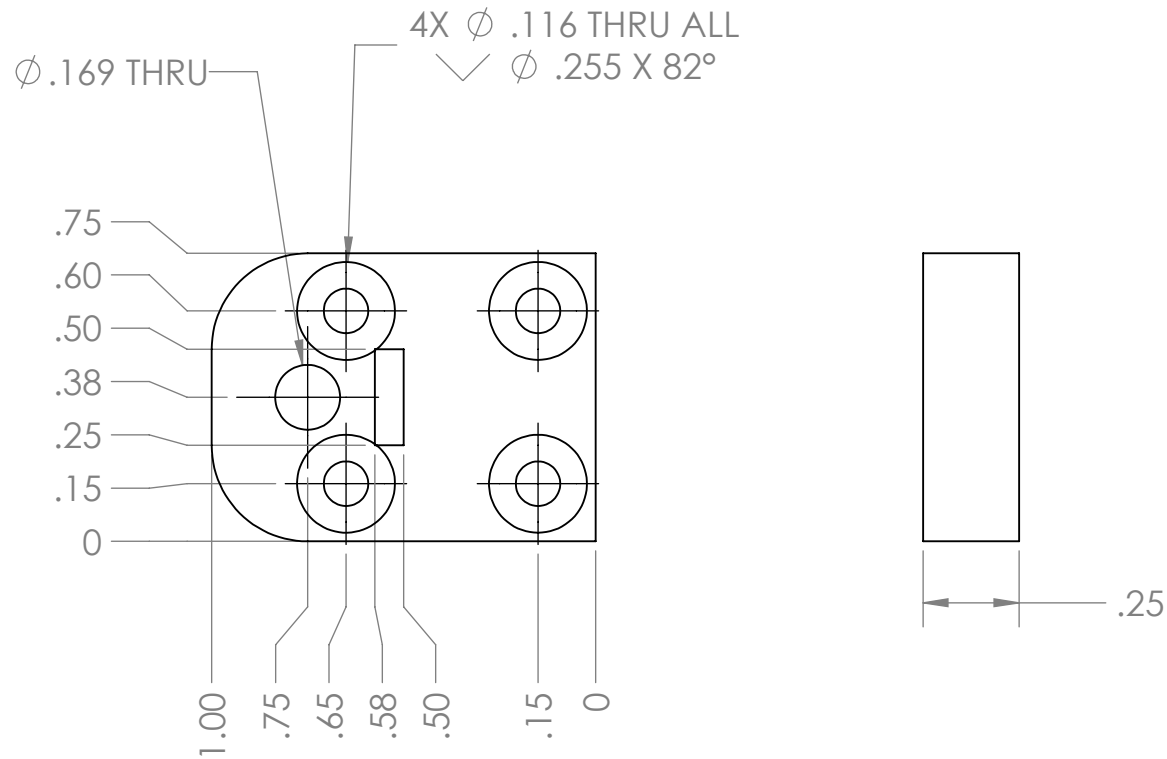
MATERIAL WEIGHT SCALE REV.

2:1

H:\ME_450\Linear Book Scanner\Saddle\

FILE PATH

SIZE
A



REMOVE BURRS & SHARP EDGES

UNLESS OTHERWISE SPECIFIED:
DIMENSIONS ARE IN INCHES

TOLERANCES:
 FRACTIONAL $\pm 1/32"$
 ANGULAR: MACH $\pm 2^\circ$ BEND: $\pm 1/16"$
 TWO PLACE DECIMAL $\pm 0.020"$
 THREE PLACE DECIMAL $\pm 0.005"$

BELT MOUNT UPPER, SADDLE

DESCRIPTION

PART NO.

GROUP

ENGINEER

SHAWN WRIGHT

DRAWN BY

DATE

MATERIAL WEIGHT

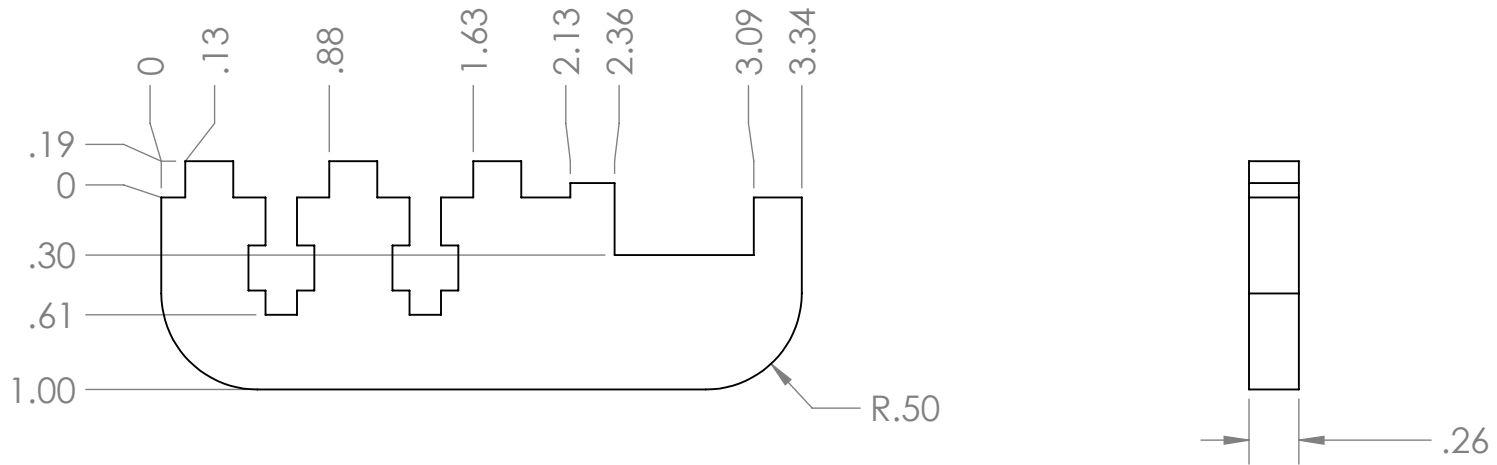
2:1

SCALE REV.

H:\ME_450\Linear Book Scanner\Saddle\

FILE PATH

SIZE
A



REMOVE BURRS & SHARP EDGES

UNLESS OTHERWISE SPECIFIED:
DIMENSIONS ARE IN INCHES

TOLERANCES:
 FRACTIONAL $\pm 1/32$ "
 ANGULAR: MACH $\pm 2^\circ$ BEND: $\pm 1/16$ "
 TWO PLACE DECIMAL ± 0.020 "
 THREE PLACE DECIMAL ± 0.005 "

BRACKET, SCANNER BAR INFEEED

DESCRIPTION

PART NO.

GROUP

ENGINEER

SHAWN WRIGHT

DRAWN BY

DATE

MATERIAL WEIGHT

1:1

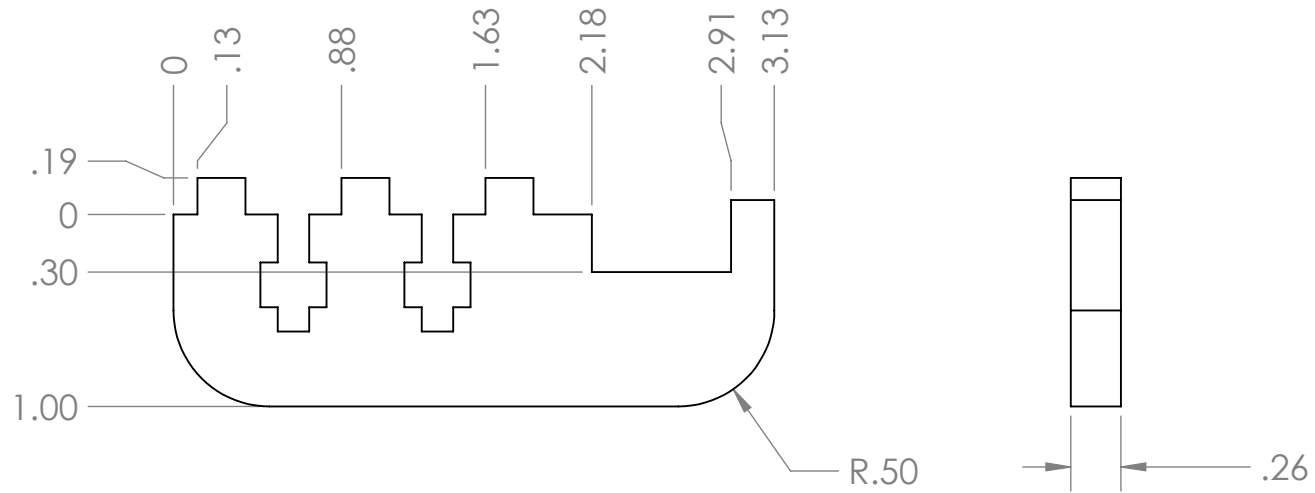
SCALE

REV.

H:\ME_450\Linear Book Scanner\Scanner Bars\

FILE PATH

SIZE
A



REMOVE BURRS & SHARP EDGES

UNLESS OTHERWISE SPECIFIED:
DIMENSIONS ARE IN INCHES

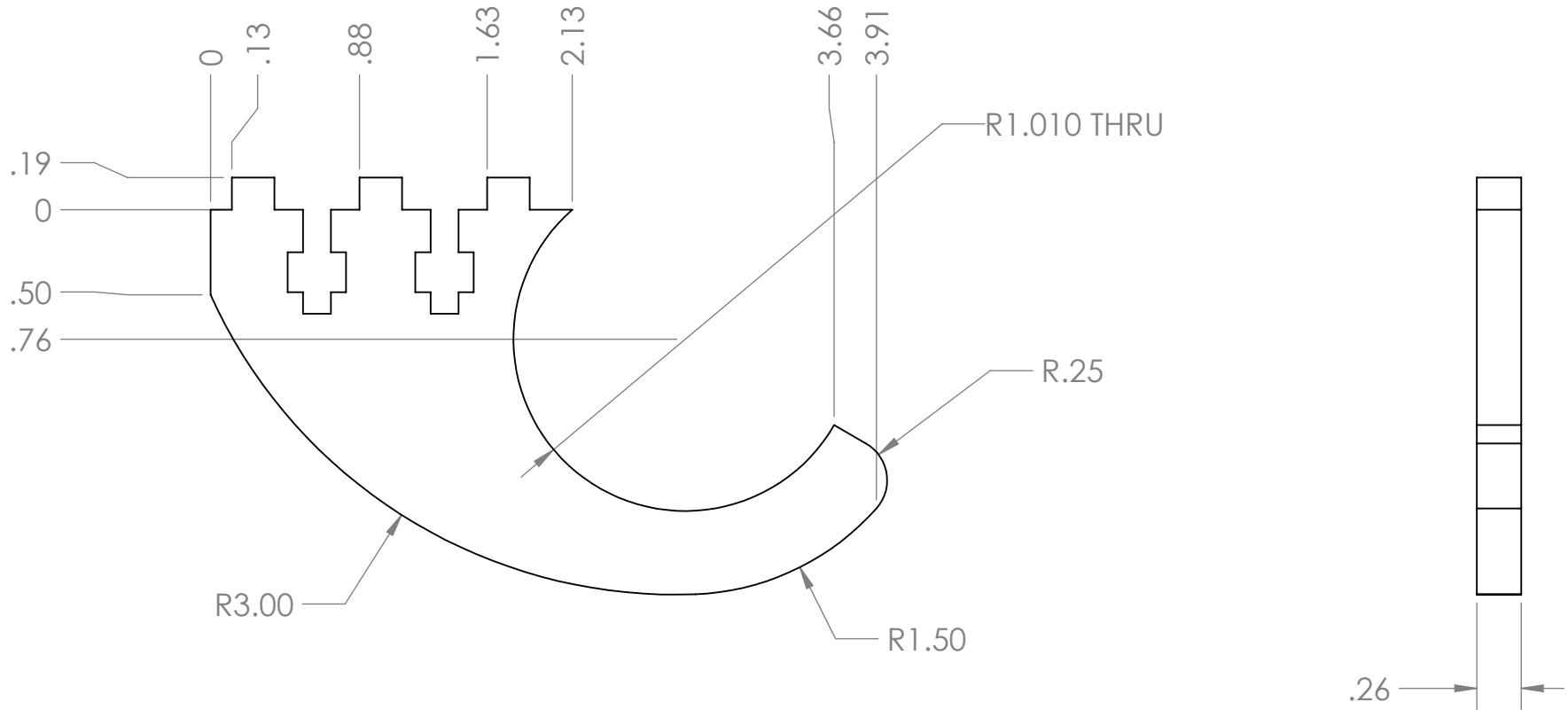
TOLERANCES:
 FRACTIONAL $\pm 1/32"$
 ANGULAR: MACH $\pm 2^\circ$ BEND: $\pm 1/16"$
 TWO PLACE DECIMAL $\pm 0.020"$
 THREE PLACE DECIMAL $\pm 0.005"$

BRACKET, SCANNER BAR OUTFEED

DESCRIPTION

| | | | |
|---|--------------|----------|------------|
| PART NO. | GROUP | | |
| ENGINEER | SHAWN WRIGHT | DRAWN BY | DATE |
| MATERIAL | WEIGHT | 1:1 | SCALE REV. |
| H:\ME_450\Linear Book Scanner\Scanner Bars\ | | | FILE PATH |

SIZE
A



REMOVE BURRS & SHARP EDGES

UNLESS OTHERWISE SPECIFIED:
DIMENSIONS ARE IN INCHES

TOLERANCES:
 FRACTIONAL $\pm 1/32"$
 ANGULAR: MACH $\pm 2^\circ$ BEND: $\pm 1/16"$
 TWO PLACE DECIMAL $\pm 0.020"$
 THREE PLACE DECIMAL $\pm 0.005"$

BRACKET, VACUUM TUBE

DESCRIPTION

PART NO.

GROUP

ENGINEER

SHAWN WRIGHT

DRAWN BY

DATE

MATERIAL WEIGHT

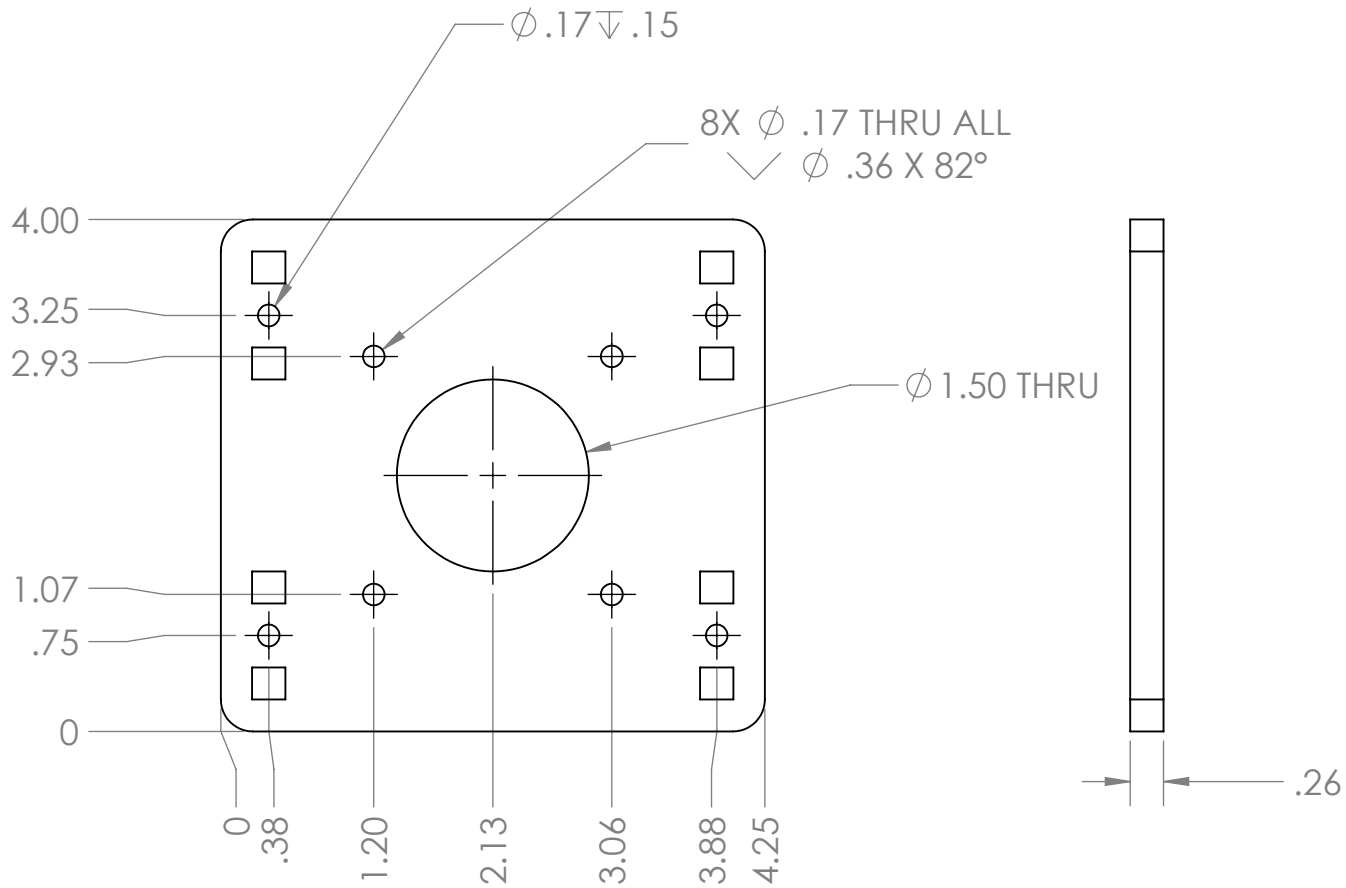
1:1

SCALE REV.

H:\ME_450\Linear Book Scanner\Vacuum Tube\

FILE PATH

SIZE
A



REMOVE BURRS & SHARP EDGES

UNLESS OTHERWISE SPECIFIED:
DIMENSIONS ARE IN INCHES

TOLERANCES:
FRACTIONAL $\pm 1/32"$
ANGULAR: MACH $\pm 2^\circ$ BEND: $\pm 1/16"$
TWO PLACE DECIMAL $\pm 0.020"$
THREE PLACE DECIMAL $\pm 0.005"$

FACE, MOTOR MOUNT

DESCRIPTION

PART NO.

GROUP

ENGINEER

SHAWN WRIGHT

DRAWN BY

DATE

MATERIAL WEIGHT

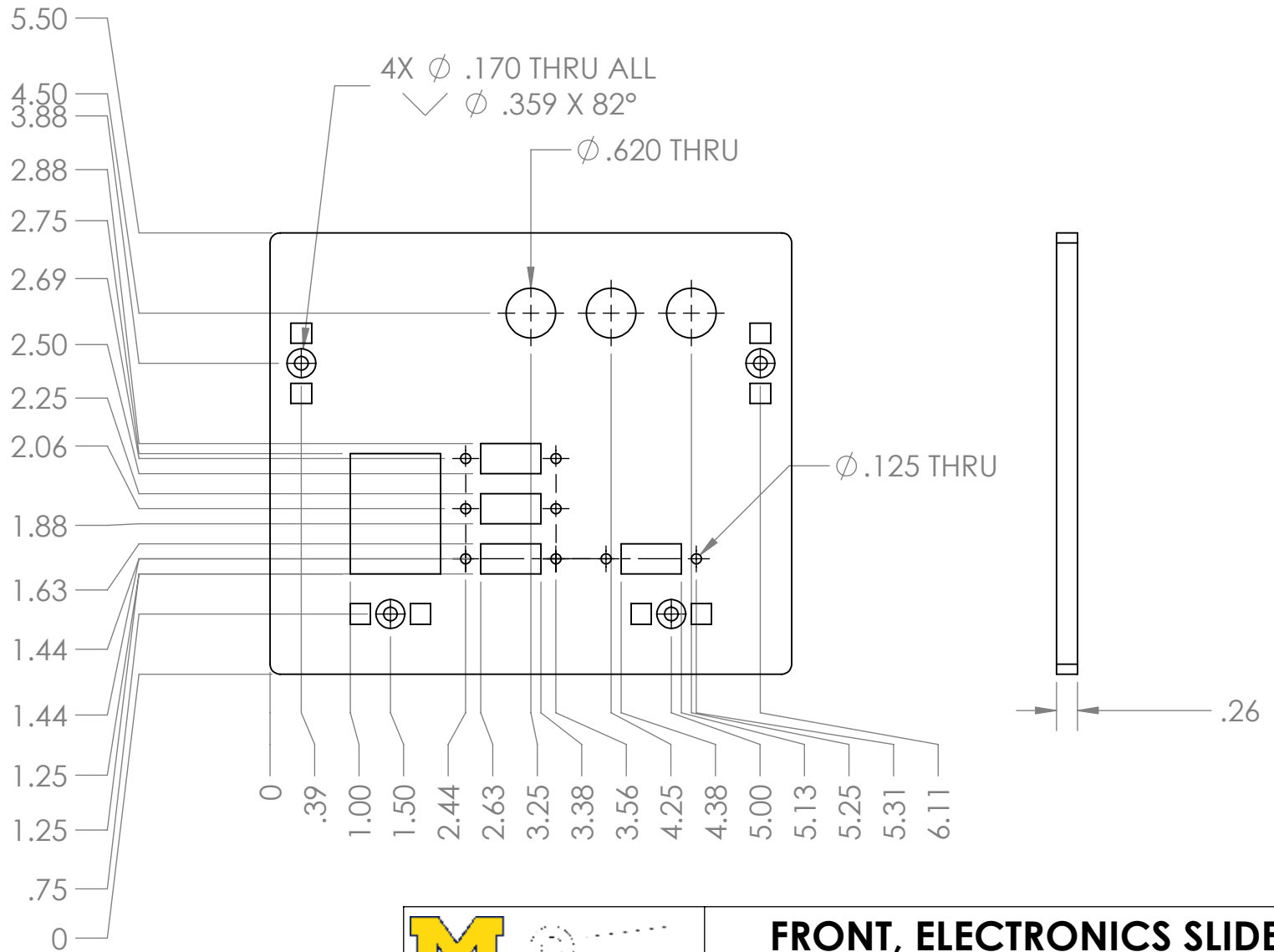
1:2

SCALE REV.

H:\ME_450\Linear Book Scanner\Motor Mount\

FILE PATH

SIZE
A



REMOVE BURRS & SHARP EDGES

UNLESS OTHERWISE SPECIFIED:
 DIMENSIONS ARE IN INCHES

TOLERANCES:
 FRACTIONAL $\pm 1/32$ "
 ANGULAR: MACH $\pm 2^\circ$ BEND: $\pm 1/16$ "
 TWO PLACE DECIMAL ± 0.020 "
 THREE PLACE DECIMAL ± 0.005 "

FRONT, ELECTRONICS SLIDE

DESCRIPTION

PART NO.

GROUP

ENGINEER

SHAWN WRIGHT

DRAWN BY

DATE

MATERIAL WEIGHT

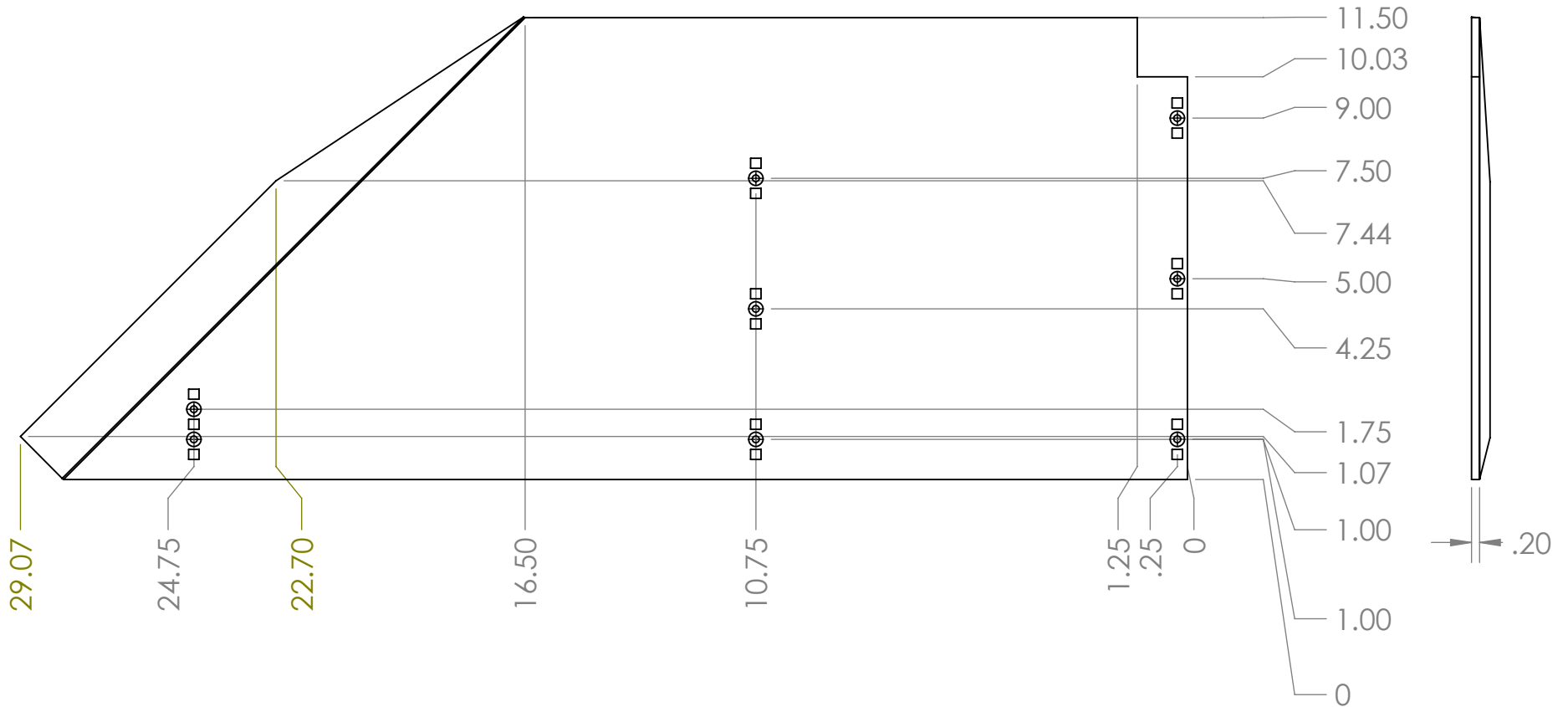
1:4

SCALE REV.

H:\ME_450\Linear Book Scanner\Electronics Slide\

FILE PATH

SIZE
A



REMOVE BURRS & SHARP EDGES

UNLESS OTHERWISE SPECIFIED:
DIMENSIONS ARE IN INCHES

TOLERANCES:
FRACTIONAL $\pm 1/32"$
ANGULAR: MACH $\pm 2^\circ$ BEND: $\pm 1/16"$
TWO PLACE DECIMAL $\pm 0.020"$
THREE PLACE DECIMAL $\pm 0.005"$

INFEEED BACK, SIDE

DESCRIPTION

PART NO.

GROUP

ENGINEER

SHAWN WRIGHT

DRAWN BY

DATE

MATERIAL WEIGHT

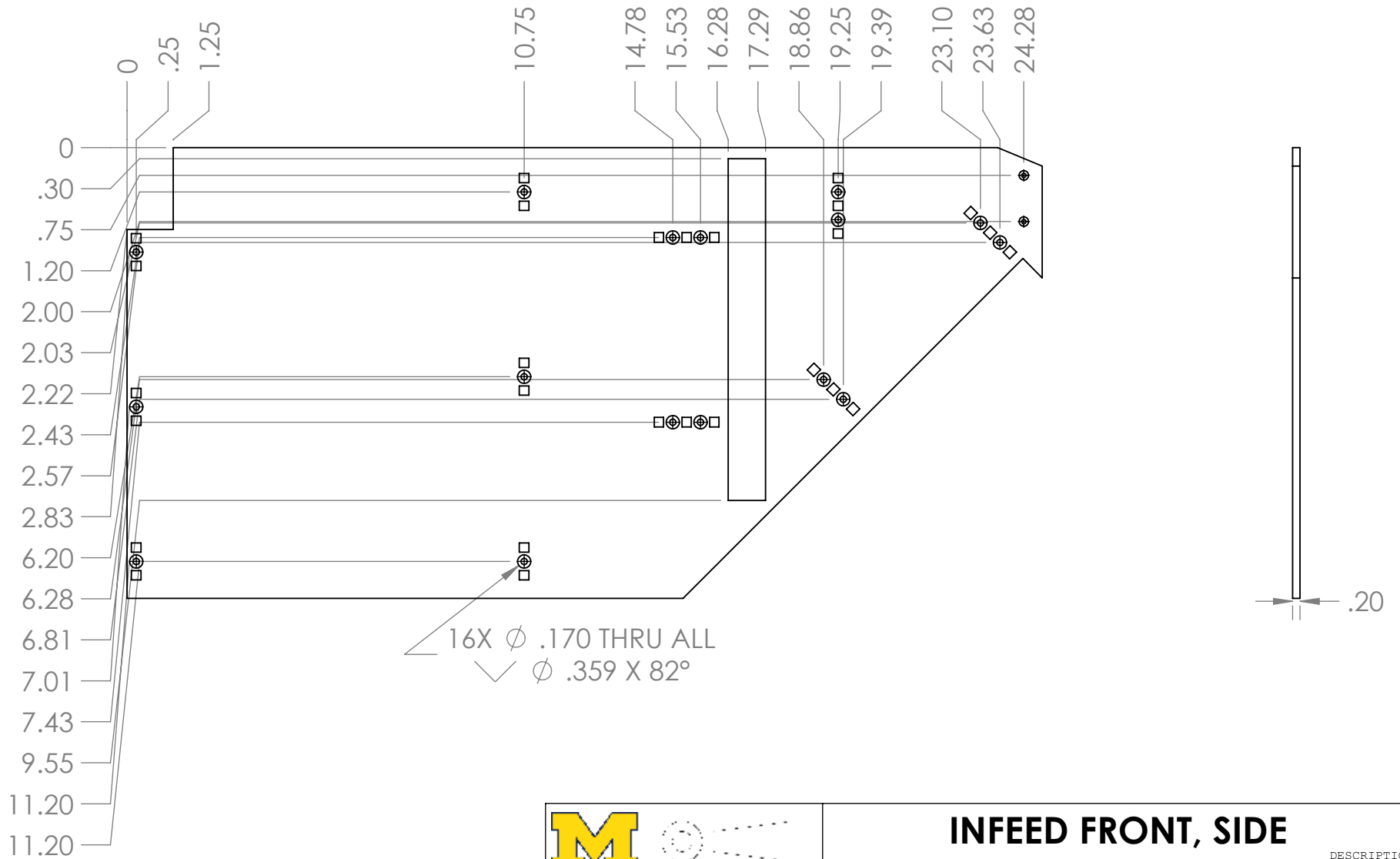
1:1

SCALE REV.

H:\ME_450\Linear Book Scanner\Sides\

FILE PATH

SIZE
A



REMOVE BURRS & SHARP EDGES

UNLESS OTHERWISE SPECIFIED:
DIMENSIONS ARE IN INCHES

TOLERANCES:
FRACTIONAL $\pm 1/32"$
ANGULAR: MACH $\pm 2^\circ$ BEND: $\pm 1/16"$
TWO PLACE DECIMAL $\pm 0.020"$
THREE PLACE DECIMAL $\pm 0.005"$

INFEED FRONT, SIDE

DESCRIPTION

PART NO.

GROUP

ENGINEER

SHAWN WRIGHT

DRAWN BY

DATE

MATERIAL WEIGHT

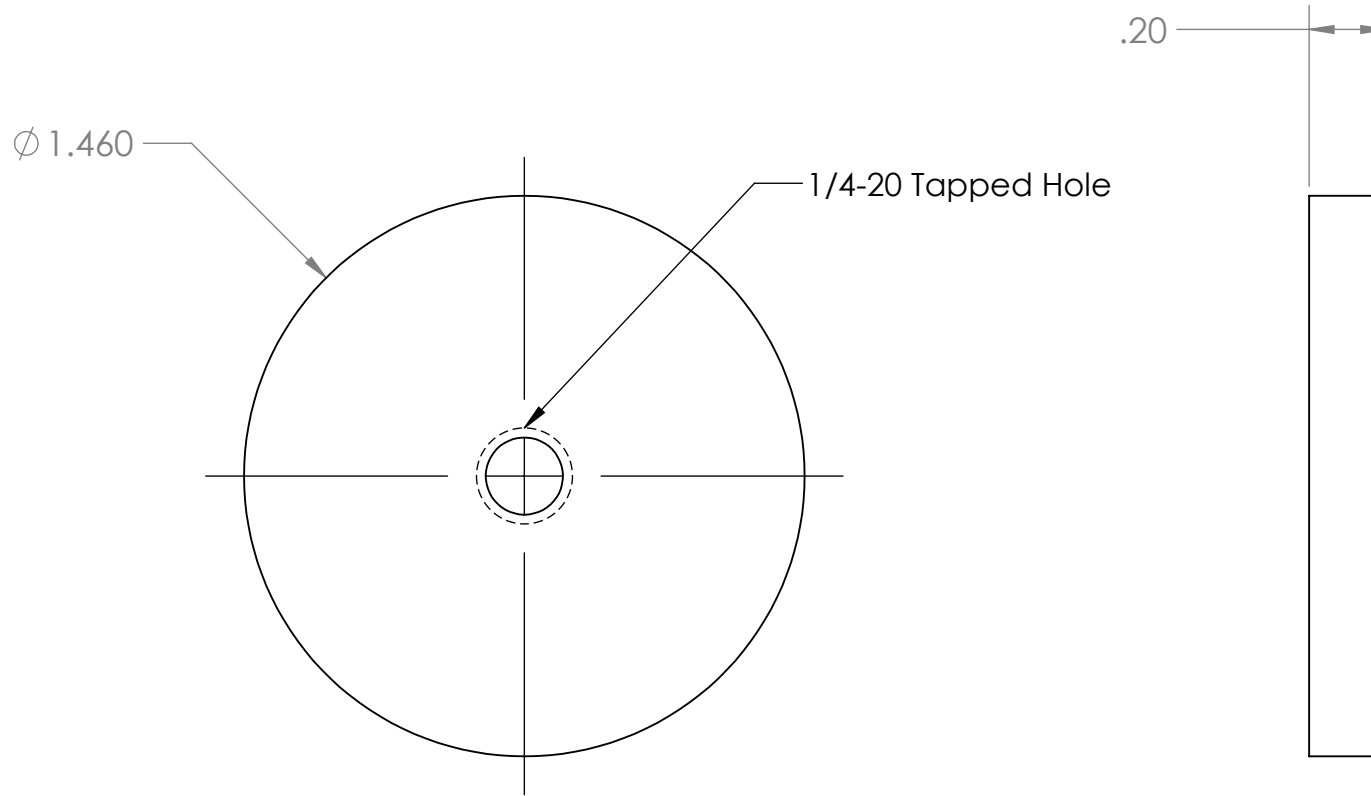
1:8

SCALE REV.

H:\ME_450\Linear Book Scanner\Sides\

FILE PATH

SIZE
A



REMOVE BURRS & SHARP EDGES

UNLESS OTHERWISE SPECIFIED:
DIMENSIONS ARE IN INCHES

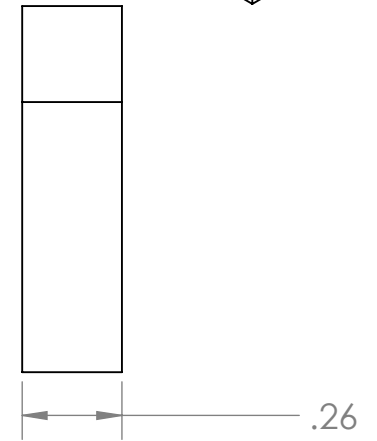
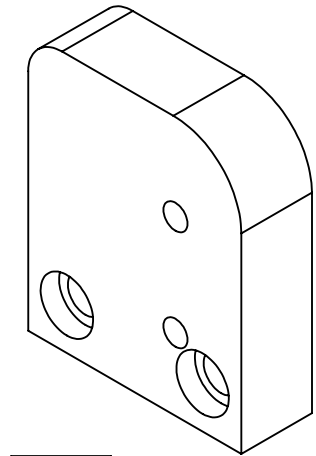
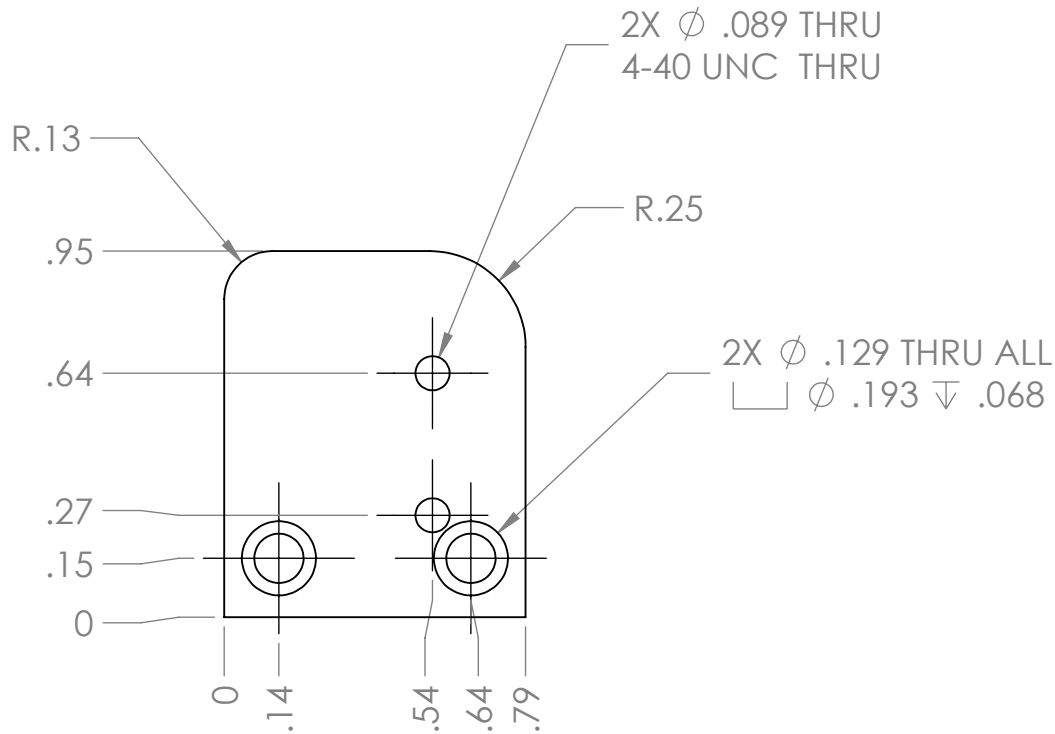
TOLERANCES:
 FRACTIONAL $\pm 1/32$ "
 ANGULAR: MACH $\pm 2^\circ$ BEND: $\pm 1/16$ "
 TWO PLACE DECIMAL ± 0.020 "
 THREE PLACE DECIMAL ± 0.005 "

INSIDE TUBE CAP, VACUUM TUBE

DESCRIPTION

| | | | |
|--|--------------|-----------|------|
| PART NO. | GROUP | | |
| ENGINEER | SHAWN WRIGHT | DRAWN BY | DATE |
| MATERIAL | WEIGHT | SCALE | REV. |
| H:\ME_450\Linear Book Scanner\Vacuum Tube\ | | FILE PATH | |

SIZE
A



REMOVE BURRS & SHARP EDGES

UNLESS OTHERWISE SPECIFIED:
DIMENSIONS ARE IN INCHES

TOLERANCES:
FRACTIONAL $\pm 1/32$ "
ANGULAR: MACH $\pm 2^\circ$ BEND: $\pm 1/16$ "
TWO PLACE DECIMAL ± 0.020 "
THREE PLACE DECIMAL ± 0.005 "

LIMIT SWITCH MOUNT, OUTFEED

DESCRIPTION

PART NO.

GROUP

ENGINEER

SHAWN WRIGHT

DRAWN BY

DATE

MATERIAL WEIGHT

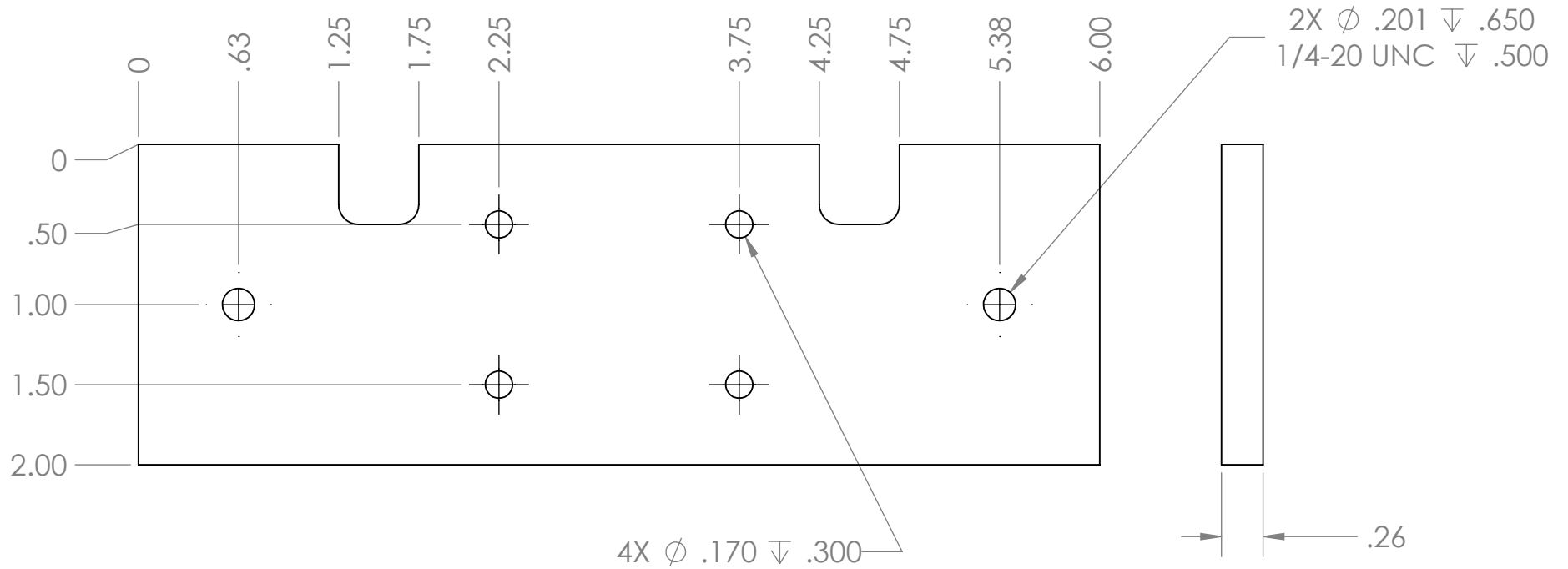
2:1

SCALE REV.

H:\ME_450\Linear Book Scanner\Pulleys\

FILE PATH

SIZE
A



REMOVE BURRS & SHARP EDGES

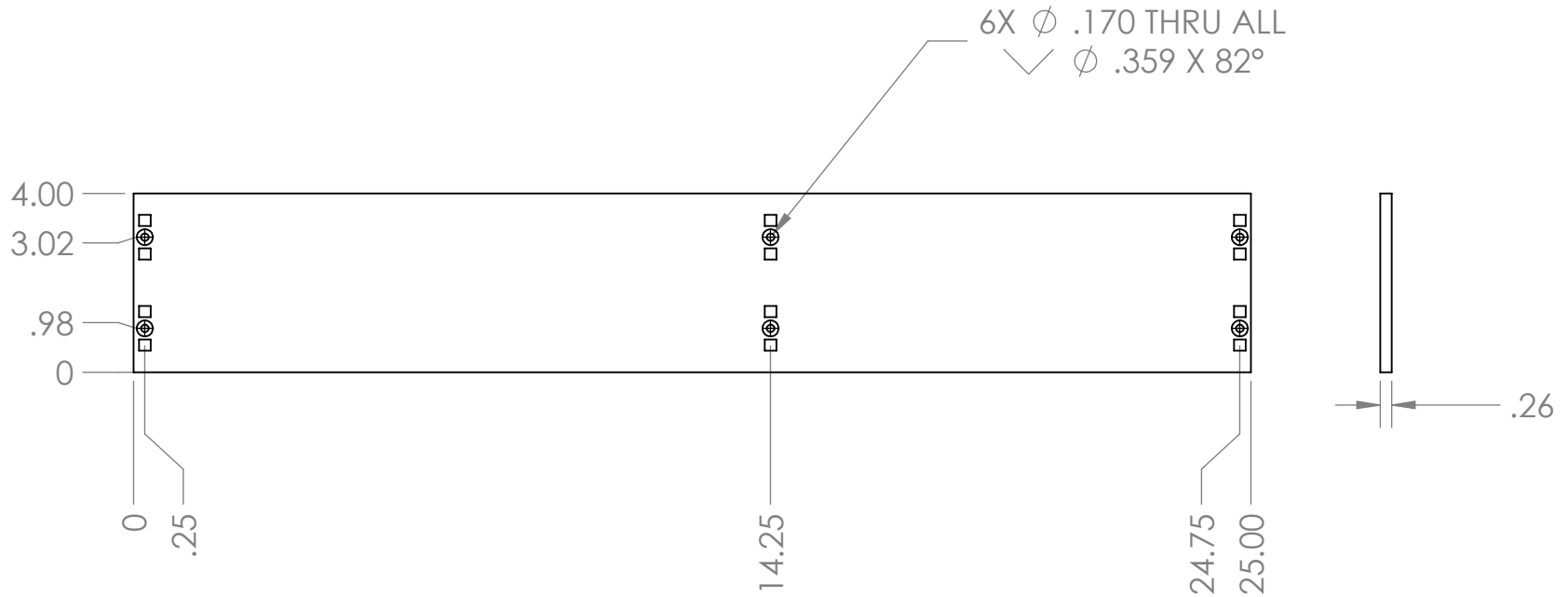
UNLESS OTHERWISE SPECIFIED:
DIMENSIONS ARE IN INCHES

TOLERANCES:
FRACTIONAL $\pm 1/32$ "
ANGULAR: MACH $\pm 2^\circ$ BEND: $\pm 1/16$ "
TWO PLACE DECIMAL ± 0.020 "
THREE PLACE DECIMAL ± 0.005 "

LINK, SADDLE

| | | | |
|-----------|--|----------|-------|
| PART NO. | | GROUP | |
| ENGINEER | | DRAWN BY | |
| DATE | | DATE | |
| MATERIAL | | WEIGHT | SCALE |
| FILE PATH | | 1:2 | REV. |

SIZE
A



REMOVE BURRS & SHARP EDGES

UNLESS OTHERWISE SPECIFIED:
DIMENSIONS ARE IN INCHES

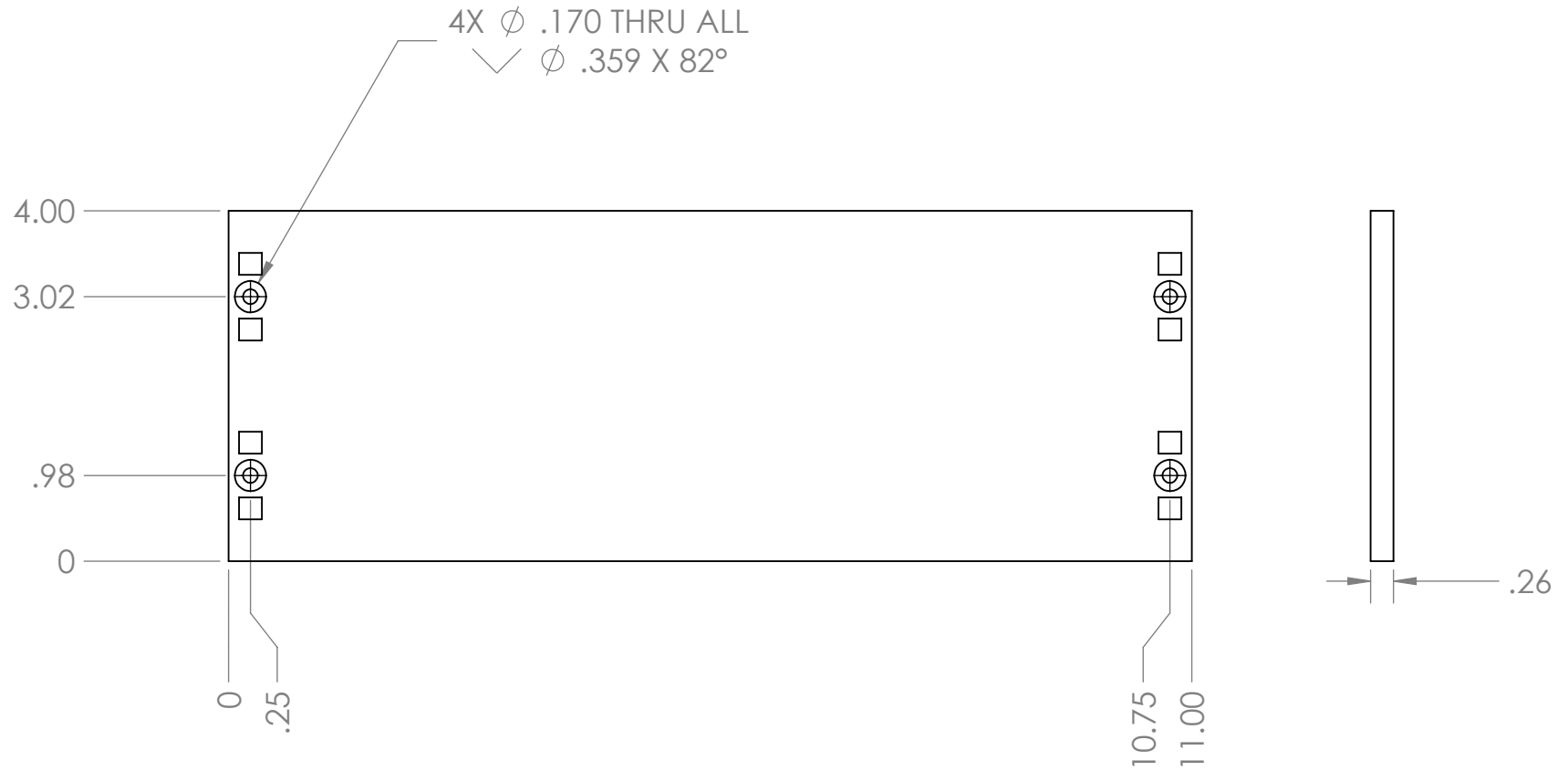
TOLERANCES:
FRACTIONAL $\pm 1/32"$
ANGULAR: MACH $\pm 2^\circ$ BEND: $\pm 1/16"$
TWO PLACE DECIMAL $\pm 0.020"$
THREE PLACE DECIMAL $\pm 0.005"$

LOWER INFED BACK RIB, FRAME

DESCRIPTION

| | | | |
|-------------------------------------|--------------|----------|-----------|
| PART NO. | GROUP | | |
| ENGINEER | SHAWN WRIGHT | DRAWN BY | DATE |
| MATERIAL | WEIGHT | 1:8 | SCALE |
| H:\ME_450\Linear Book Scanner\Fram\ | | | FILE PATH |

SIZE
A



REMOVE BURRS & SHARP EDGES

UNLESS OTHERWISE SPECIFIED:
DIMENSIONS ARE IN INCHES

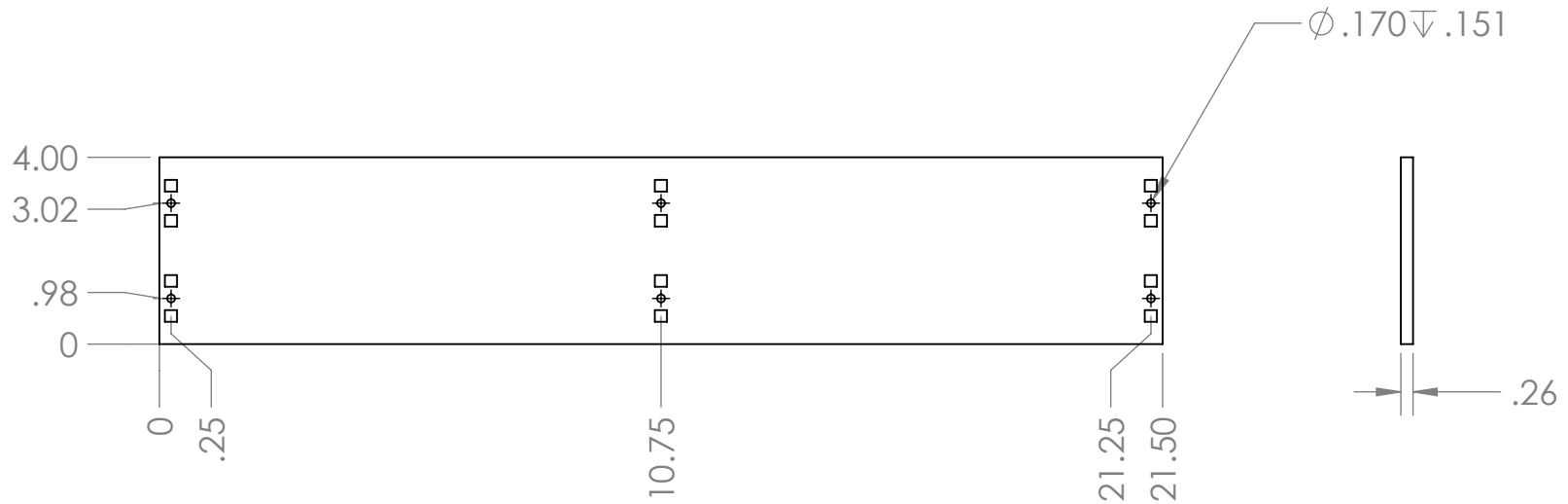
TOLERANCES:
FRACTIONAL $\pm 1/32"$
ANGULAR: MACH $\pm 2^\circ$ BEND: $\pm 1/16"$
TWO PLACE DECIMAL $\pm 0.020"$
THREE PLACE DECIMAL $\pm 0.005"$

LOWER INFEEED FRONT RIB, FRAME

DESCRIPTION

| | | | |
|-------------------------------------|--------------|----------|-----------|
| PART NO. | GROUP | | |
| ENGINEER | SHAWN WRIGHT | DRAWN BY | DATE |
| MATERIAL | WEIGHT | 1:4 | REV. |
| H:\ME_450\Linear Book Scanner\Fram\ | | | FILE PATH |

SIZE
A



REMOVE BURRS & SHARP EDGES

UNLESS OTHERWISE SPECIFIED:
DIMENSIONS ARE IN INCHES

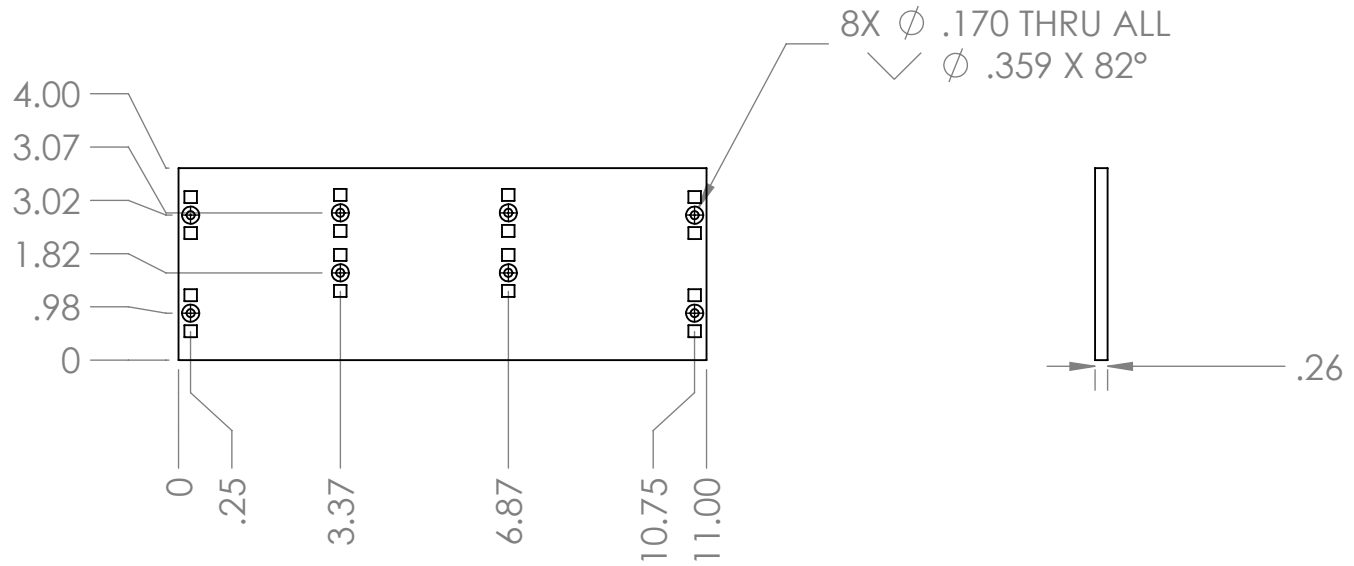
TOLERANCES:
FRACTIONAL $\pm 1/32"$
ANGULAR: MACH $\pm 2^\circ$ BEND: $\pm 1/16"$
TWO PLACE DECIMAL $\pm 0.020"$
THREE PLACE DECIMAL $\pm 0.005"$

LOWER OUTFEED BACK RIB, FRAME

DESCRIPTION

| | | | |
|--------------------------------------|--------------|----------|-----------|
| PART NO. | GROUP | | |
| ENGINEER | SHAWN WRIGHT | DRAWN BY | DATE |
| MATERIAL | WEIGHT | 1:8 | SCALE |
| H:\ME_450\Linear Book Scanner\Frame\ | | | FILE PATH |

SIZE
A



LOWER OUTFEED FRONT RIB, FRAME

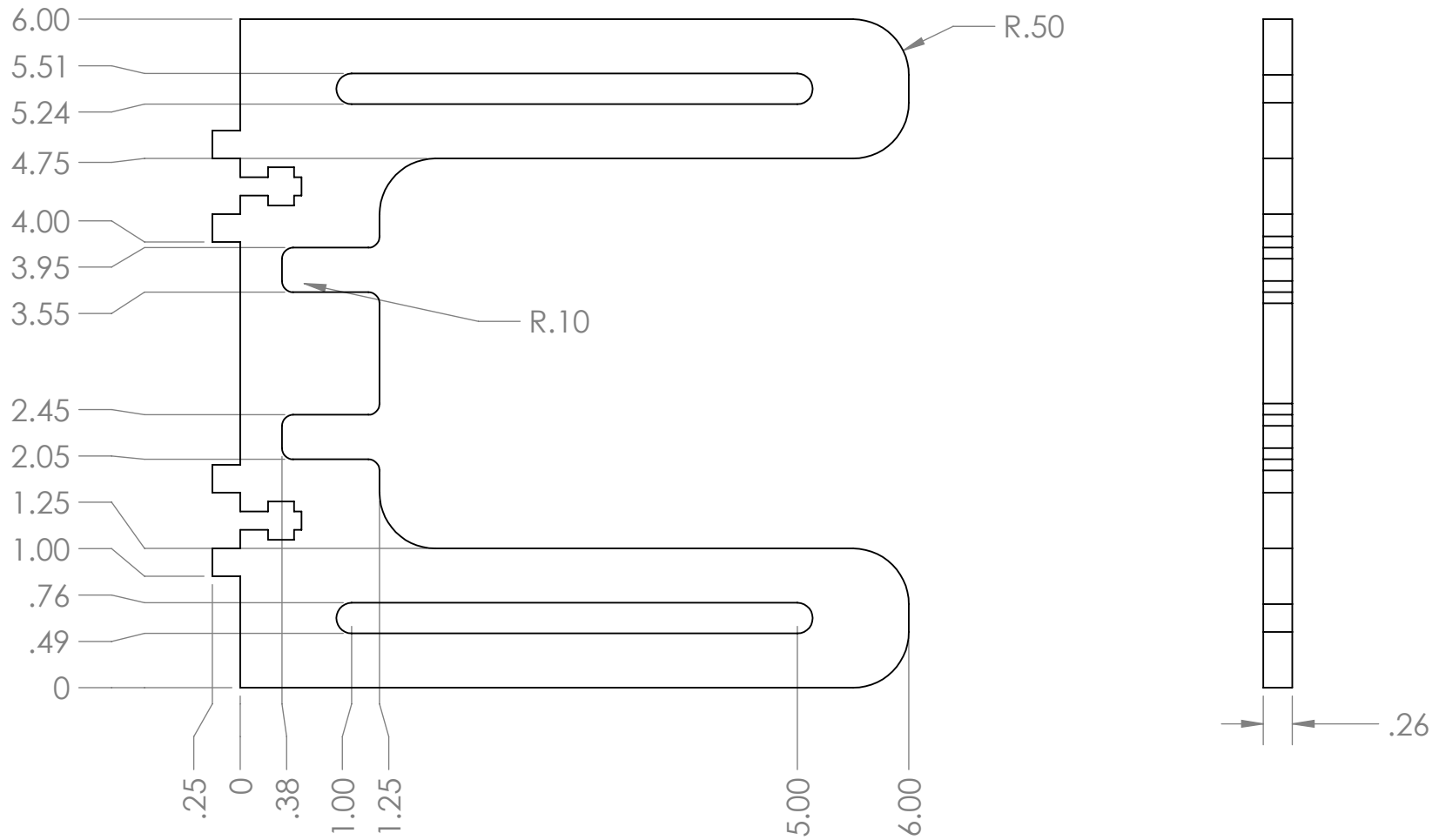
REMOVE BURRS & SHARP EDGES

UNLESS OTHERWISE SPECIFIED:
DIMENSIONS ARE IN INCHES

TOLERANCES:
 FRACTIONAL $\pm 1/32"$
 ANGULAR: MACH $\pm 2^\circ$ BEND: $\pm 1/16"$
 TWO PLACE DECIMAL $\pm 0.020"$
 THREE PLACE DECIMAL $\pm 0.005"$

| | | | |
|--------------------------------------|--|----------|-------|
| PART NO. | | GROUP | |
| ENGINEER | | DATE | |
| SHAWN WRIGHT | | DRAWN BY | |
| MATERIAL | | WEIGHT | SCALE |
| H:\ME_450\Linear Book Scanner\Frame\ | | 1:4 | REV. |
| FILE PATH | | | |

SIZE
A



REMOVE BURRS & SHARP EDGES

UNLESS OTHERWISE SPECIFIED:
DIMENSIONS ARE IN INCHES

TOLERANCES:
 FRACTIONAL $\pm 1/32"$
 ANGULAR: MACH $\pm 2^\circ$ BEND: $\pm 1/16"$
 TWO PLACE DECIMAL $\pm 0.020"$
 THREE PLACE DECIMAL $\pm 0.005"$

LOWER PADDLE SLIDE, SADDLE

DESCRIPTION

PART NO.

GROUP

ENGINEER

SHAWN WRIGHT

DRAWN BY

DATE

MATERIAL WEIGHT

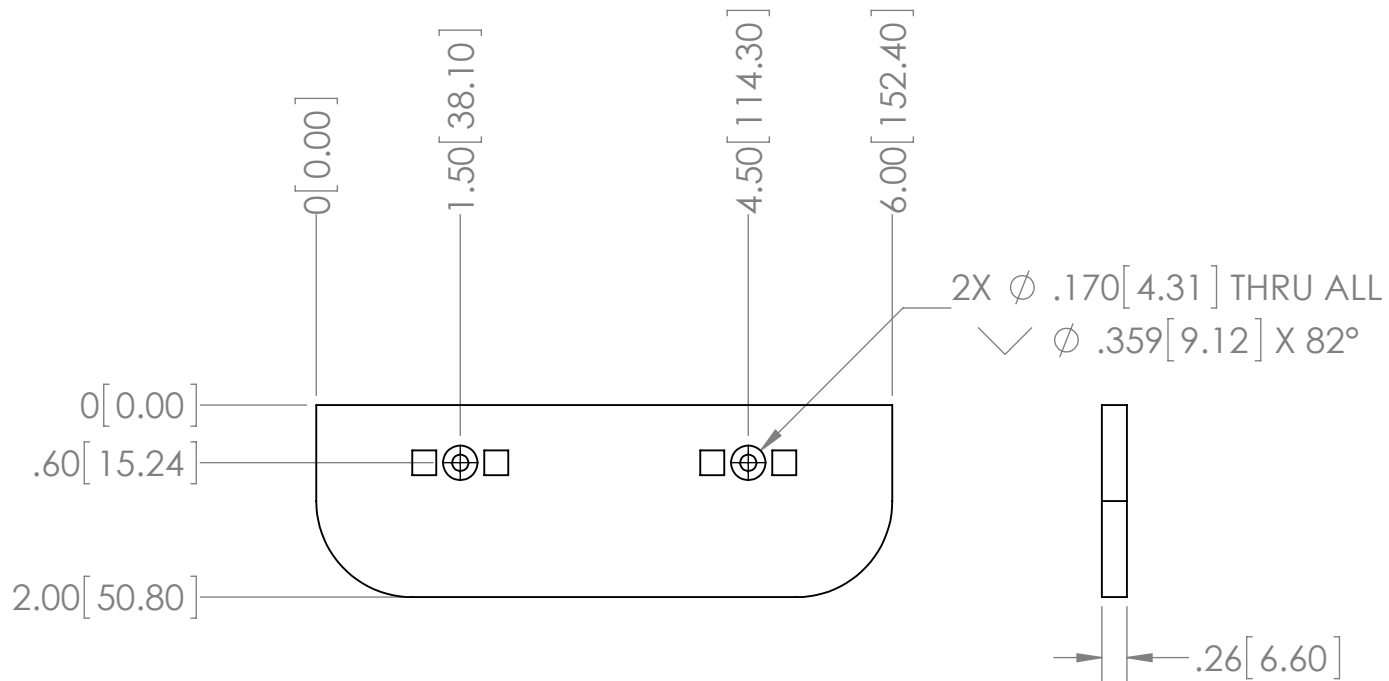
1:4

SCALE REV.

H:\ME_450\Linear Book Scanner\Saddle\

FILE PATH

SIZE
A



REMOVE BURRS & SHARP EDGES

UNLESS OTHERWISE SPECIFIED:
DIMENSIONS ARE IN INCHES

TOLERANCES:
 FRACTIONAL $\pm 1/32$ "
 ANGULAR: MACH $\pm 2^\circ$ BEND: $\pm 1/16$ "
 TWO PLACE DECIMAL ± 0.020 "
 THREE PLACE DECIMAL ± 0.005 "

LOWER PADDLE, SADDLE

DESCRIPTION

PART NO.

GROUP

ENGINEER

SHAWN WRIGHT

DRAWN BY

DATE

MATERIAL WEIGHT SCALE

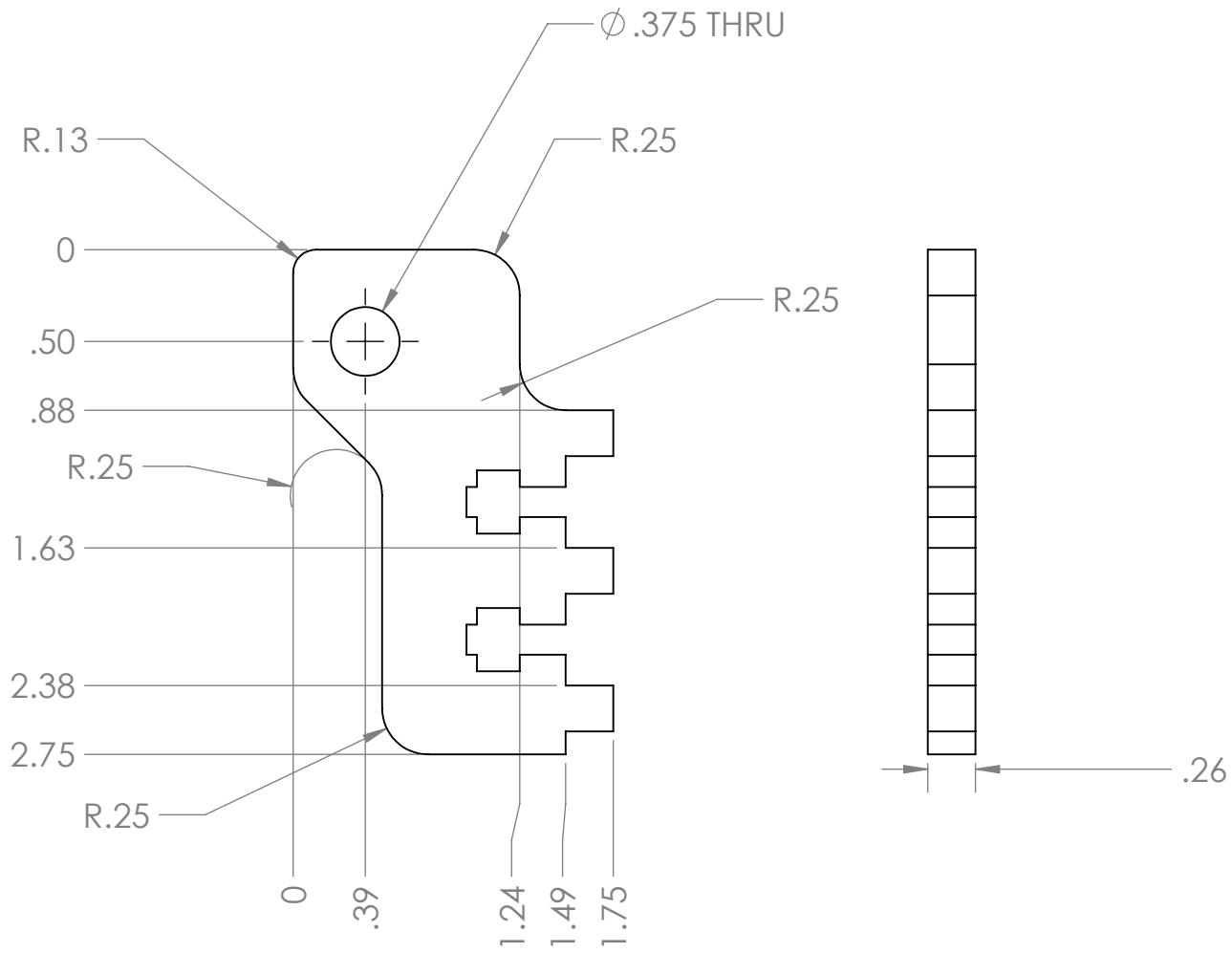
1:2

REV.

H:\ME_450\Linear Book Scanner\Saddle\

FILE PATH

SIZE
A



REMOVE BURRS & SHARP EDGES

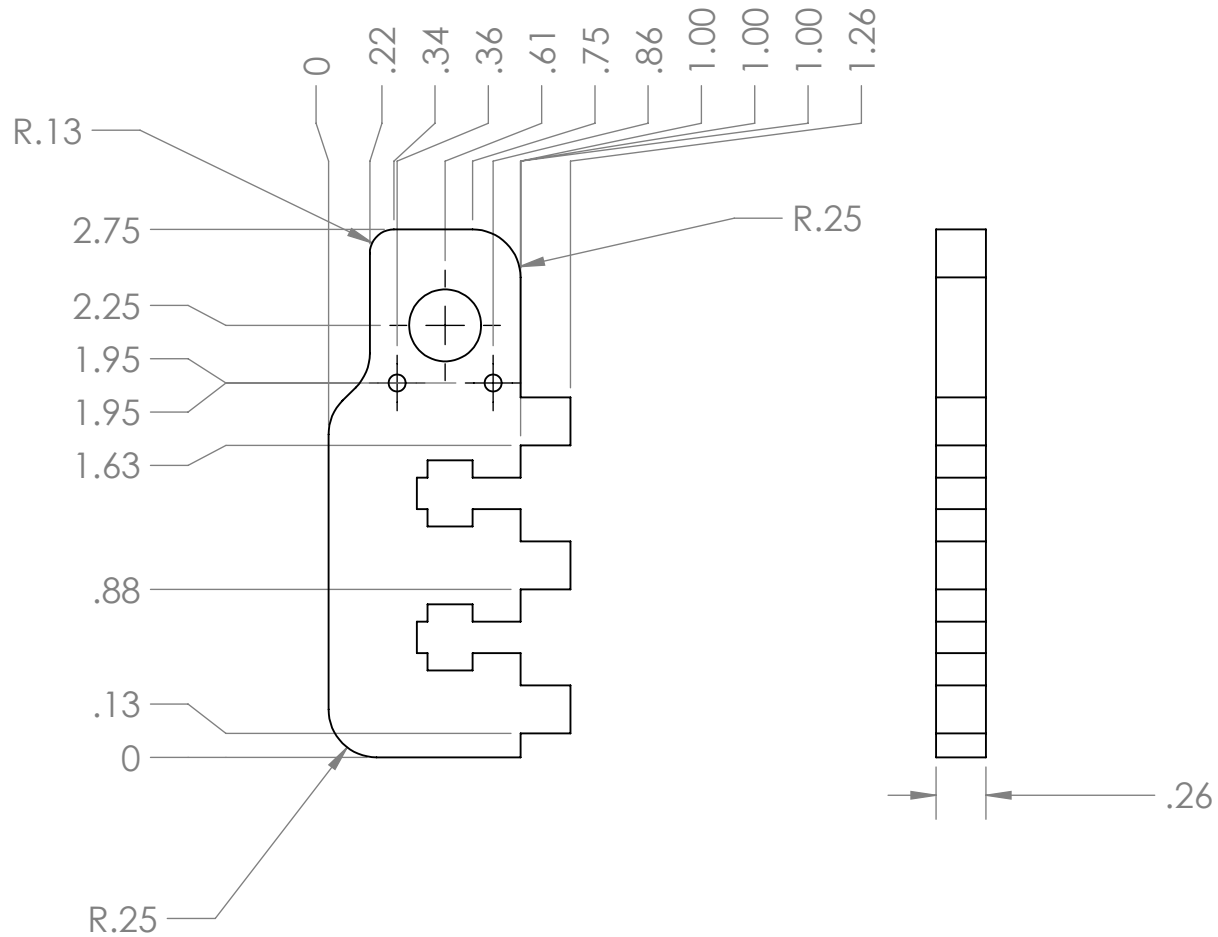
UNLESS OTHERWISE SPECIFIED:
DIMENSIONS ARE IN INCHES

TOLERANCES:
FRACTIONAL $\pm 1/32"$
ANGULAR: MACH $\pm 2^\circ$ BEND: $\pm 1/16"$
TWO PLACE DECIMAL $\pm 0.020"$
THREE PLACE DECIMAL $\pm 0.005"$

MOUNT OFFSET, PULLEY

| | | | |
|--|--|-------------|------|
| PART NO. | | DESCRIPTION | |
| ENGINEER | | GROUP | |
| SHAWN WRIGHT | | - | |
| DRAWN BY | | DATE | |
| MATERIAL | | 1:1 | REV. |
| WEIGHT | | SCALE | |
| H:\ME_450\Linear Book Scanner\Pulleys\ FILE PATH | | | |

SIZE
A



REMOVE BURRS & SHARP EDGES

UNLESS OTHERWISE SPECIFIED:
DIMENSIONS ARE IN INCHES

TOLERANCES:
 FRACTIONAL $\pm 1/32"$
 ANGULAR: MACH $\pm 2^\circ$ BEND: $\pm 1/16"$
 TWO PLACE DECIMAL $\pm 0.020"$
 THREE PLACE DECIMAL $\pm 0.005"$

MOUNT, PULLY

DESCRIPTION

PART NO.

GROUP

SHAWN WRIGHT

ENGINEER

DRAWN BY

DATE

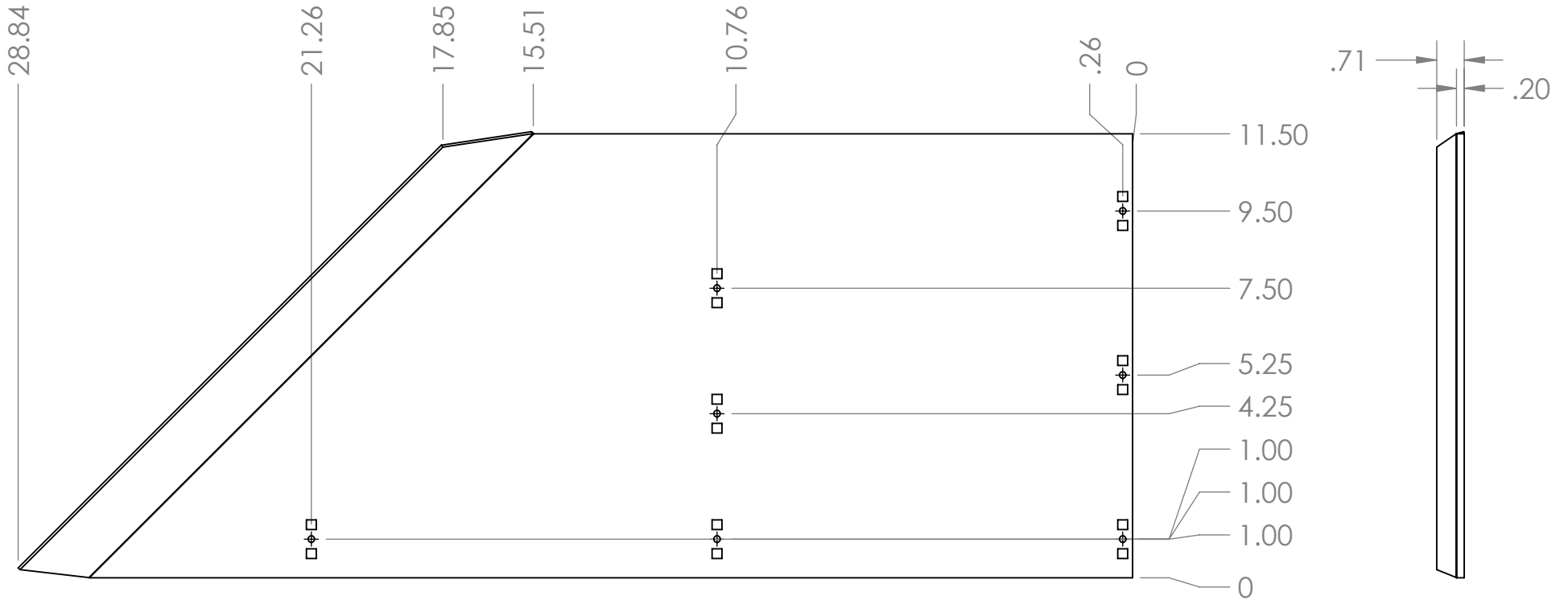
MATERIAL WEIGHT SCALE REV.

1:1

H:\ME_450\Linear Book Scanner\Pulleys\

FILE PATH

SIZE
A



REMOVE BURRS & SHARP EDGES

UNLESS OTHERWISE SPECIFIED:
DIMENSIONS ARE IN INCHES

TOLERANCES:
 FRACTIONAL $\pm 1/32"$
 ANGULAR: MACH $\pm 2^\circ$ BEND: $\pm 1/16"$
 TWO PLACE DECIMAL $\pm 0.020"$
 THREE PLACE DECIMAL $\pm 0.005"$

OUTFEED BACK, SIDE

DESCRIPTION

PART NO.

GROUP

ENGINEER

SHAWN WRIGHT

DRAWN BY

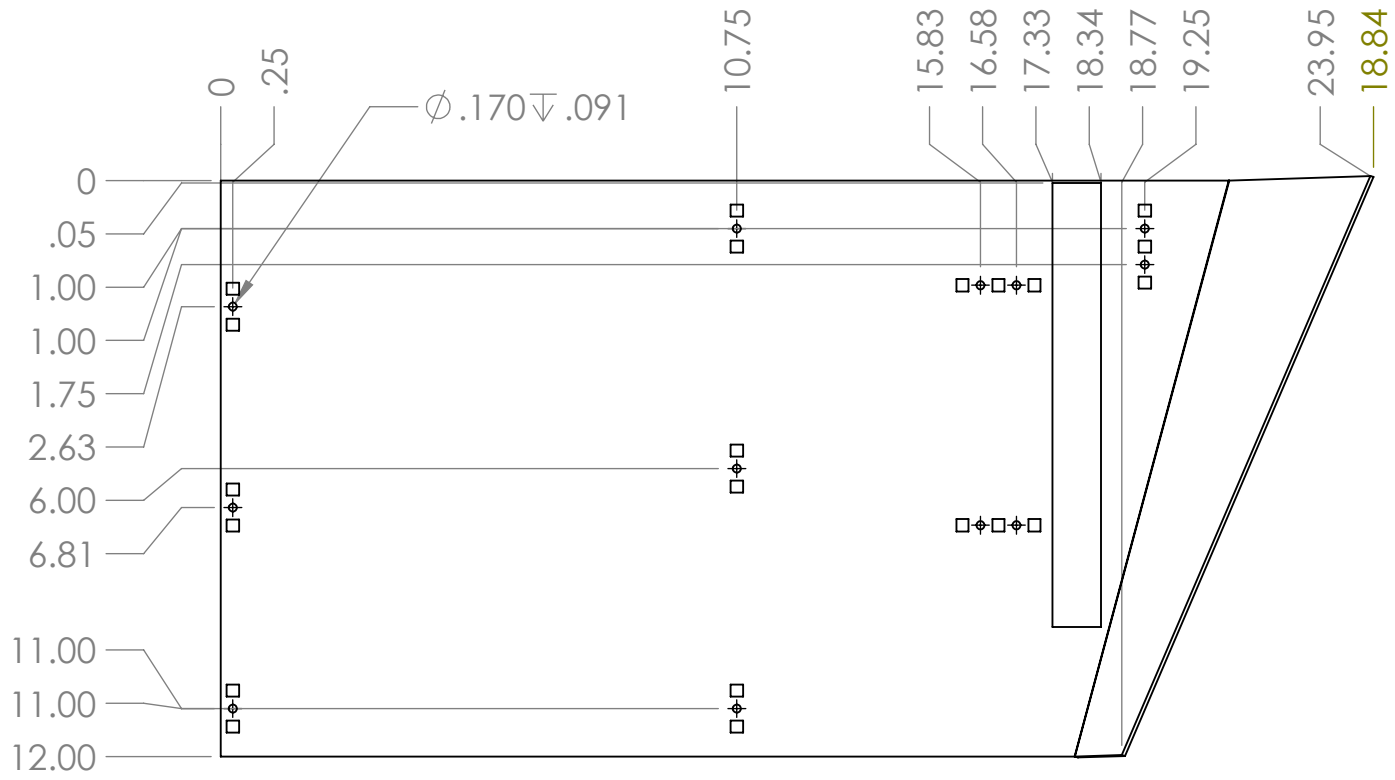
DATE

MATERIAL WEIGHT SCALE REV.

H:\ME_450\Linear Book Scanner\Sides\

FILE PATH

SIZE
A



REMOVE BURRS & SHARP EDGES

UNLESS OTHERWISE SPECIFIED:
DIMENSIONS ARE IN INCHES

TOLERANCES:
FRACTIONAL $\pm 1/32"$
ANGULAR: MACH $\pm 2^\circ$ BEND: $\pm 1/16"$
TWO PLACE DECIMAL $\pm 0.020"$
THREE PLACE DECIMAL $\pm 0.005"$

OUTFEED FRONT, SIDE

DESCRIPTION

PART NO.

GROUP

ENGINEER

SHAWN WRIGHT

DRAWN BY

DATE

MATERIAL WEIGHT

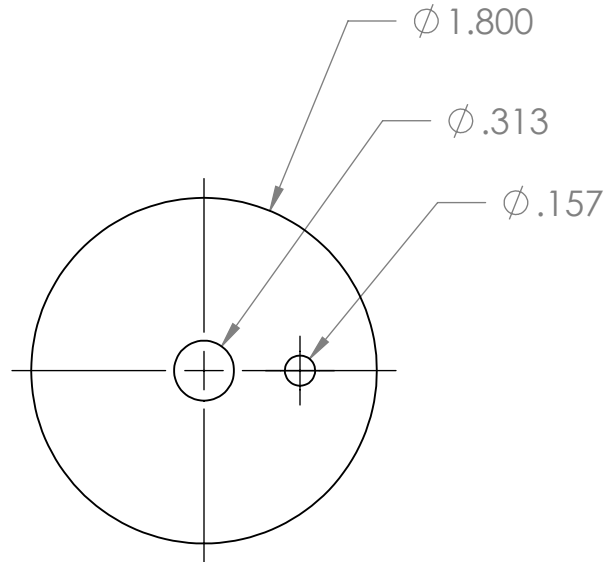
1:8

SCALE REV.

H:\ME_450\Linear Book Scanner\Sides\

FILE PATH

SIZE
A



REMOVE BURRS & SHARP EDGES

UNLESS OTHERWISE SPECIFIED:
DIMENSIONS ARE IN INCHES

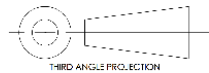
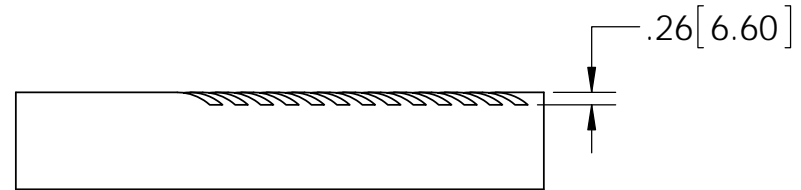
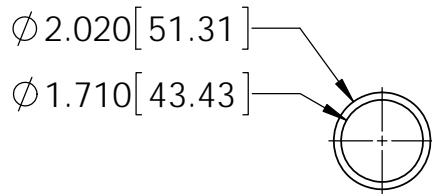
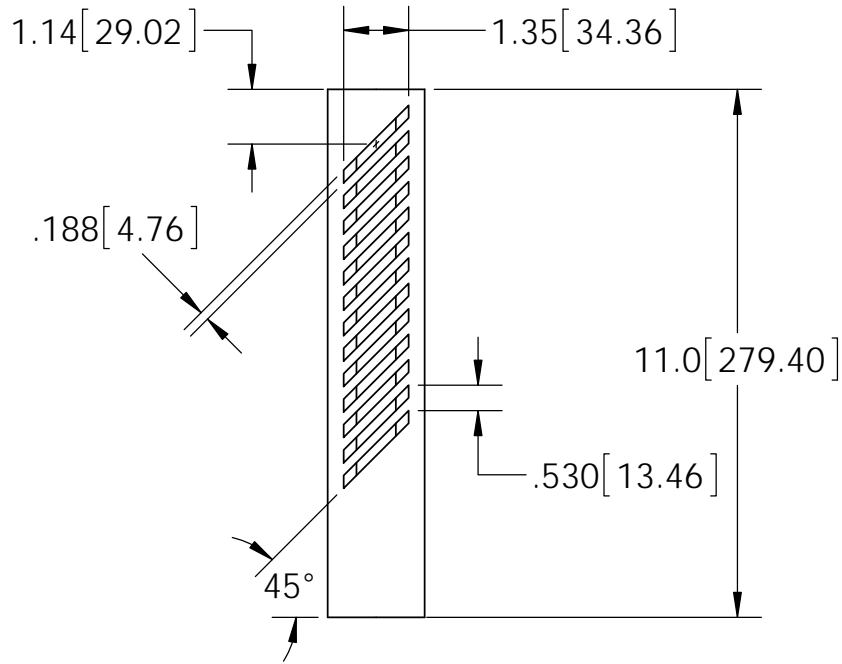
TOLERANCES:
 FRACTIONAL $\pm 1/32"$
 ANGULAR: MACH $\pm 2^\circ$ BEND: $\pm 1/16"$
 TWO PLACE DECIMAL $\pm 0.020"$
 THREE PLACE DECIMAL $\pm 0.005"$

OUTSIDE TUBE CAP, VACUUM TUBE

DESCRIPTION

| | | | |
|--|--------------|----------|-----------|
| PART NO. | GROUP | | |
| ENGINEER | SHAWN WRIGHT | DRAWN BY | DATE |
| MATERIAL | WEIGHT | 1:1 | REV. |
| H:\ME_450\Linear Book Scanner\Vacuum Tube\ | | | FILE PATH |

SIZE
A



REMOVE BURRS & SHARP EDGES

UNLESS OTHERWISE SPECIFIED:
DIMENSIONS ARE IN INCHES

TOLERANCES:
FRACTIONAL $\pm 1/32"$
ANGULAR: MACH $\pm 2^\circ$ BEND: $\pm 1/16"$
TWO PLACE DECIMAL $\pm 0.020"$
THREE PLACE DECIMAL $\pm 0.005"$

OUTSIDE TUBE, VACUUM TUBE

DESCRIPTION

LINEAR BOOK SCANNER

PART NO.

GROUP

ENGINEER

SHAWN WRIGHT

DRAWN BY

11/5/2013

DATE

DELTRIN

MATERIAL

WEIGHT

1:4

SCALE

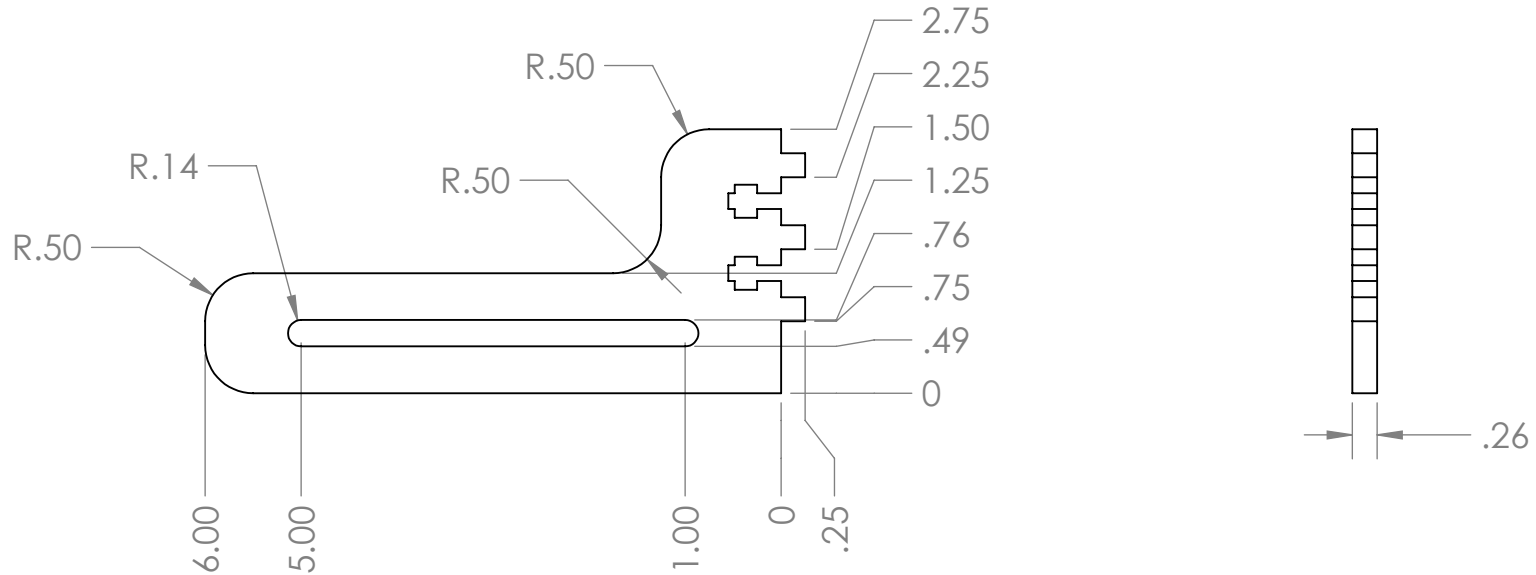
REV.

H:\ME_450\Linear Book Scanner\Vacuum Tube\

FILE PATH

THIS DRAWING AND ALL PROPRIETARY RIGHTS AND CONCEPTS HEREIN ARE THE EXCLUSIVE PROPERTY OF LBS AND ARE NOT TO BE USED, DUPLICATED OR TREATED IN ANY WAY INCONSISTANT WITH SUCH RIGHTS WITHOUT PERMISSION OF LBS.

SIZE
A



REMOVE BURRS & SHARP EDGES

UNLESS OTHERWISE SPECIFIED:
DIMENSIONS ARE IN INCHES

TOLERANCES:
 FRACTIONAL $\pm 1/32"$
 ANGULAR: MACH $\pm 2^\circ$ BEND: $\pm 1/16"$
 TWO PLACE DECIMAL $\pm 0.020"$
 THREE PLACE DECIMAL $\pm 0.005"$

PADDLE SLIDE, SADDLE

DESCRIPTION

PART NO.

GROUP

ENGINEER

SHAWN WRIGHT

DRAWN BY

DATE

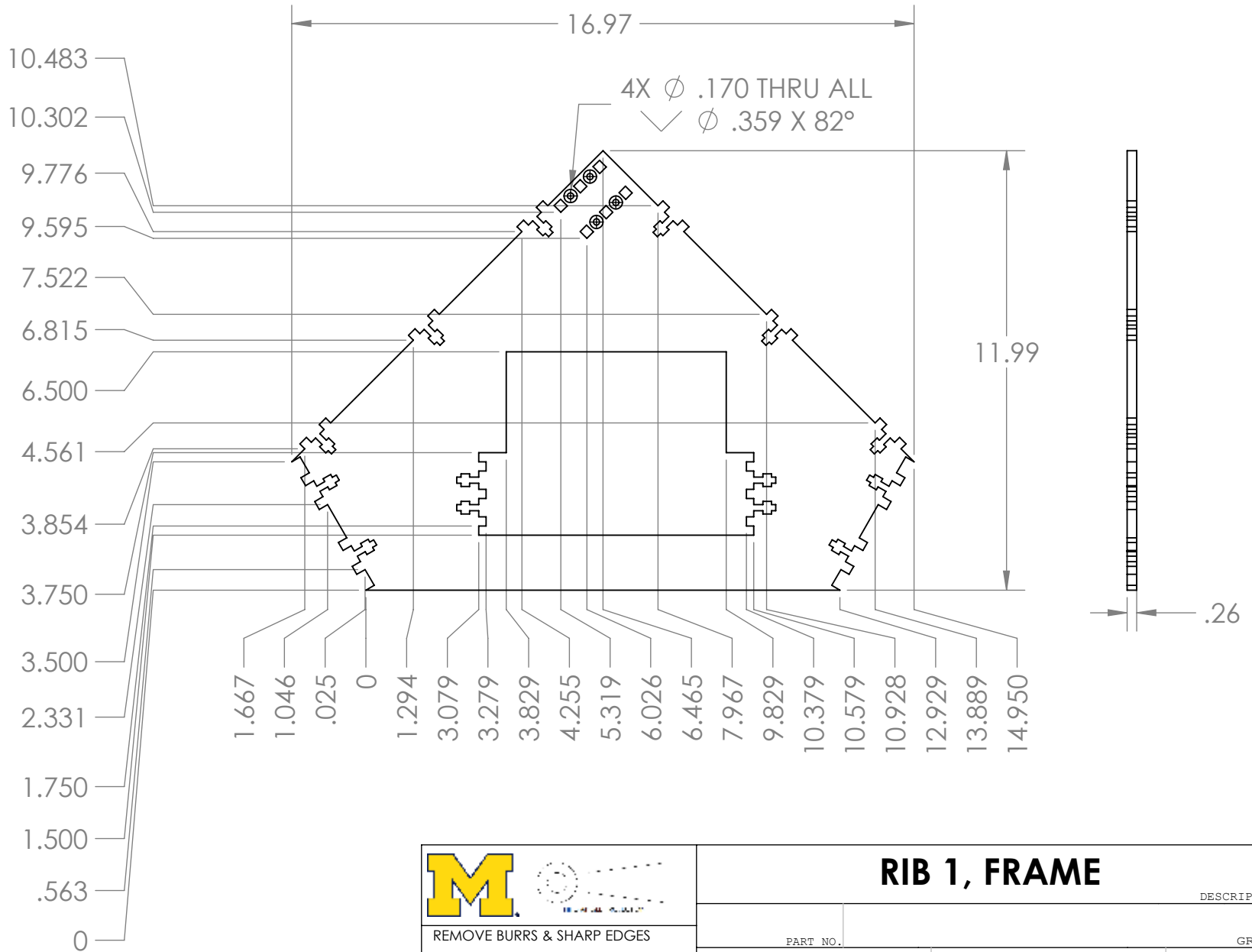
MATERIAL WEIGHT SCALE REV.

1:2

H:\ME_450\Linear Book Scanner\Saddle\

FILE PATH

SIZE
A



REMOVE BURRS & SHARP EDGES

UNLESS OTHERWISE SPECIFIED:
DIMENSIONS ARE IN INCHES

TOLERANCES:
FRACTIONAL $\pm 1/32"$
ANGULAR: MACH $\pm 2^\circ$ BEND: $\pm 1/16"$
TWO PLACE DECIMAL $\pm 0.020"$
THREE PLACE DECIMAL $\pm 0.005"$

RIB 1, FRAME

DESCRIPTION

PART NO.

GROUP

ENGINEER

SHAWN WRIGHT

DRAWN BY

12/11/2013

DATE

ACRYLIC

MATERIAL WEIGHT

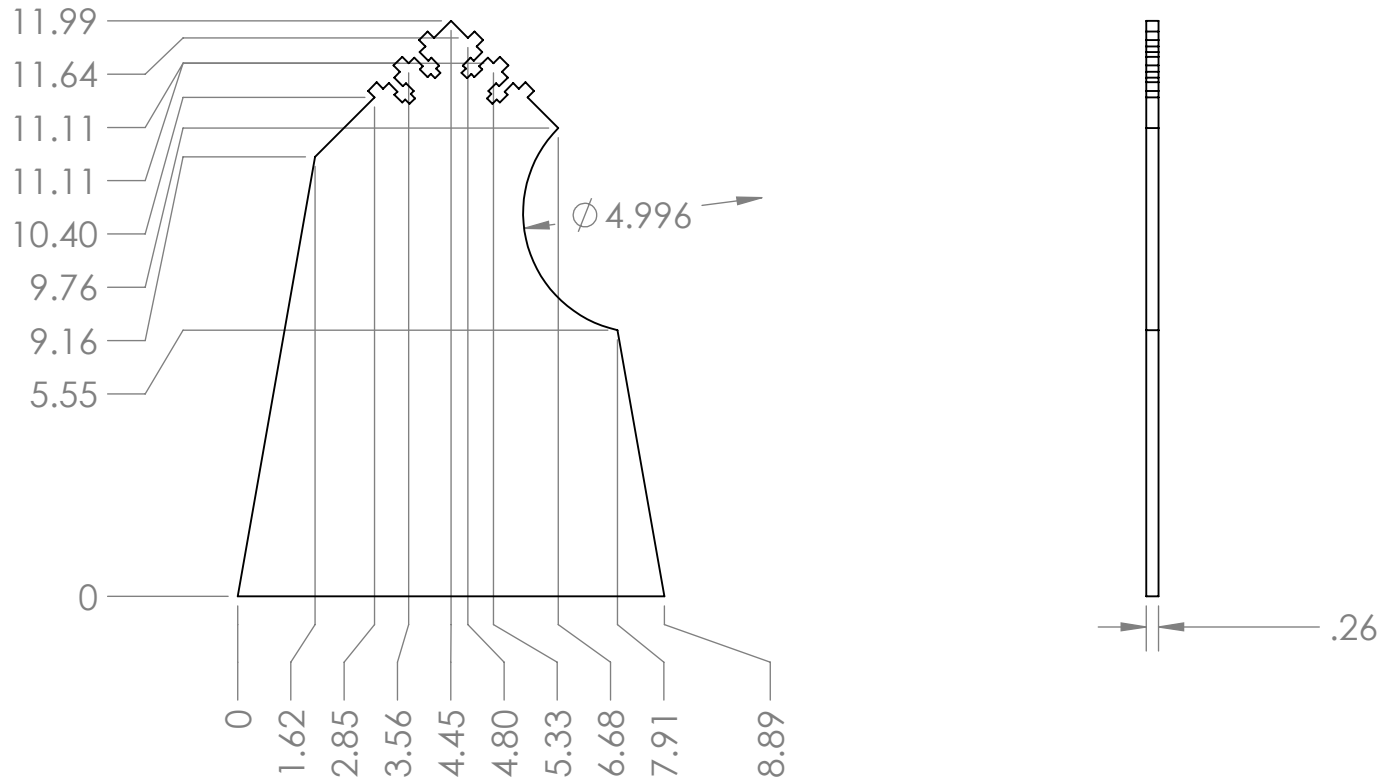
1:4

SCALE REV.

H:\ME_450\Linear Book Scanner\Fram\

FILE PATH

SIZE
A



REMOVE BURRS & SHARP EDGES

UNLESS OTHERWISE SPECIFIED:
DIMENSIONS ARE IN INCHES

TOLERANCES:
FRACTIONAL $\pm 1/32$ "
ANGULAR: MACH $\pm 2^\circ$ BEND: $\pm 1/16$ "
TWO PLACE DECIMAL ± 0.020 "
THREE PLACE DECIMAL ± 0.005 "

RIB 3, FRAME

DESCRIPTION

PART NO.

GROUP

ENGINEER

SHAWN WRIGHT

DRAWN BY

DATE

MATERIAL WEIGHT

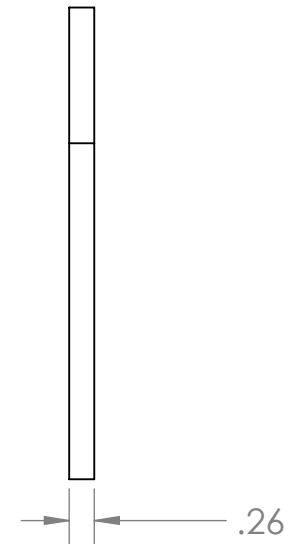
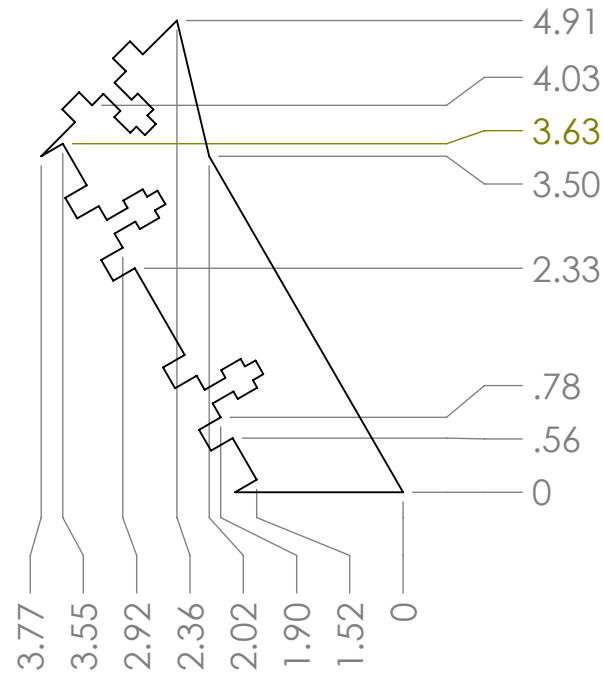
1:4

SCALE REV.

H:\ME_450\Linear Book Scanner\Fram\

FILE PATH

SIZE
A



REMOVE BURRS & SHARP EDGES

UNLESS OTHERWISE SPECIFIED:
DIMENSIONS ARE IN INCHES

TOLERANCES:
FRACTIONAL $\pm 1/32"$
ANGULAR: MACH $\pm 2^\circ$ BEND: $\pm 1/16"$
TWO PLACE DECIMAL $\pm 0.020"$
THREE PLACE DECIMAL $\pm 0.005"$

RIB 4 OUTFEED, FRAME

DESCRIPTION

PART NO.

GROUP

ENGINEER

SHAWN WRIGHT

DRAWN BY

DATE

MATERIAL WEIGHT

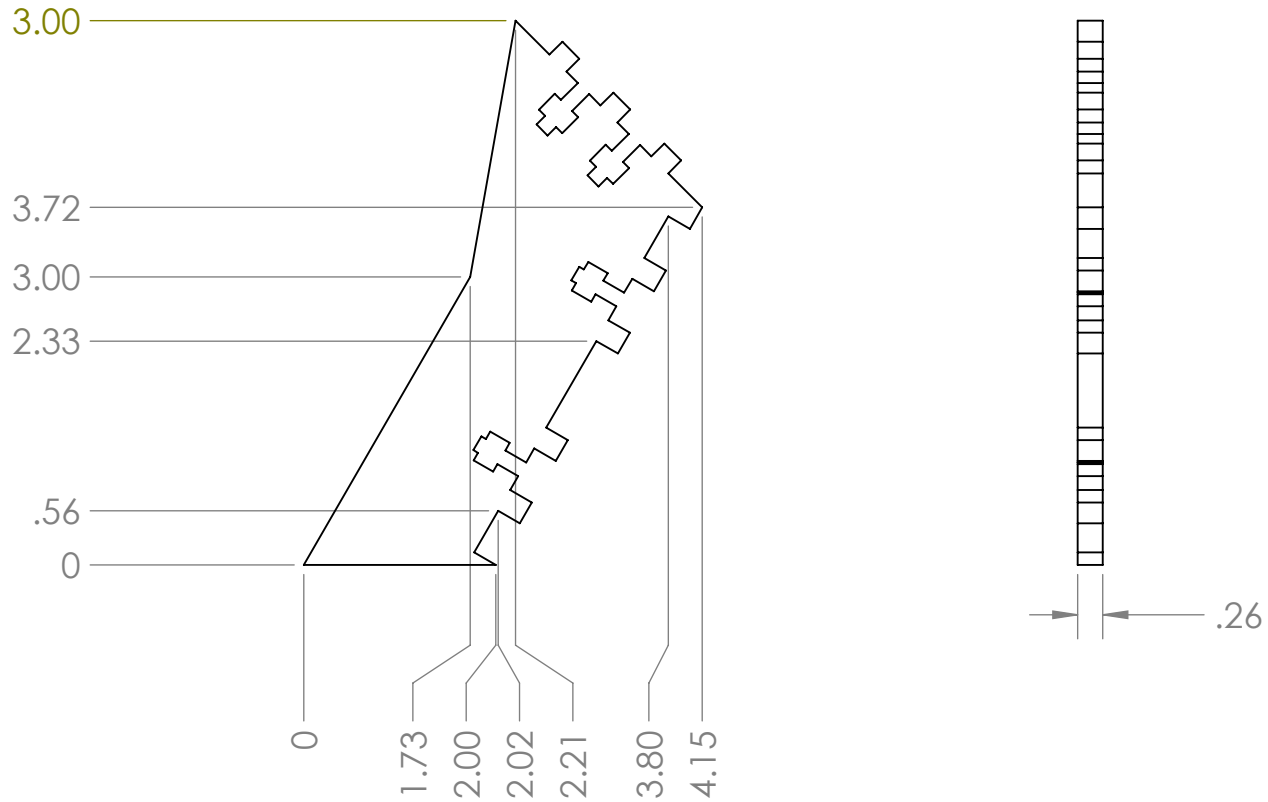
1:2

SCALE REV.

H:\ME_450\Linear Book Scanner\Fram\

FILE PATH

SIZE
A



REMOVE BURRS & SHARP EDGES

UNLESS OTHERWISE SPECIFIED:
DIMENSIONS ARE IN INCHES

TOLERANCES:
FRACTIONAL $\pm 1/32"$
ANGULAR: MACH $\pm 2^\circ$ BEND: $\pm 1/16"$
TWO PLACE DECIMAL $\pm 0.020"$
THREE PLACE DECIMAL $\pm 0.005"$

RIB 4, FRAME

DESCRIPTION

PART NO.

GROUP

ENGINEER

SHAWN WRIGHT

DRAWN BY

DATE

MATERIAL WEIGHT

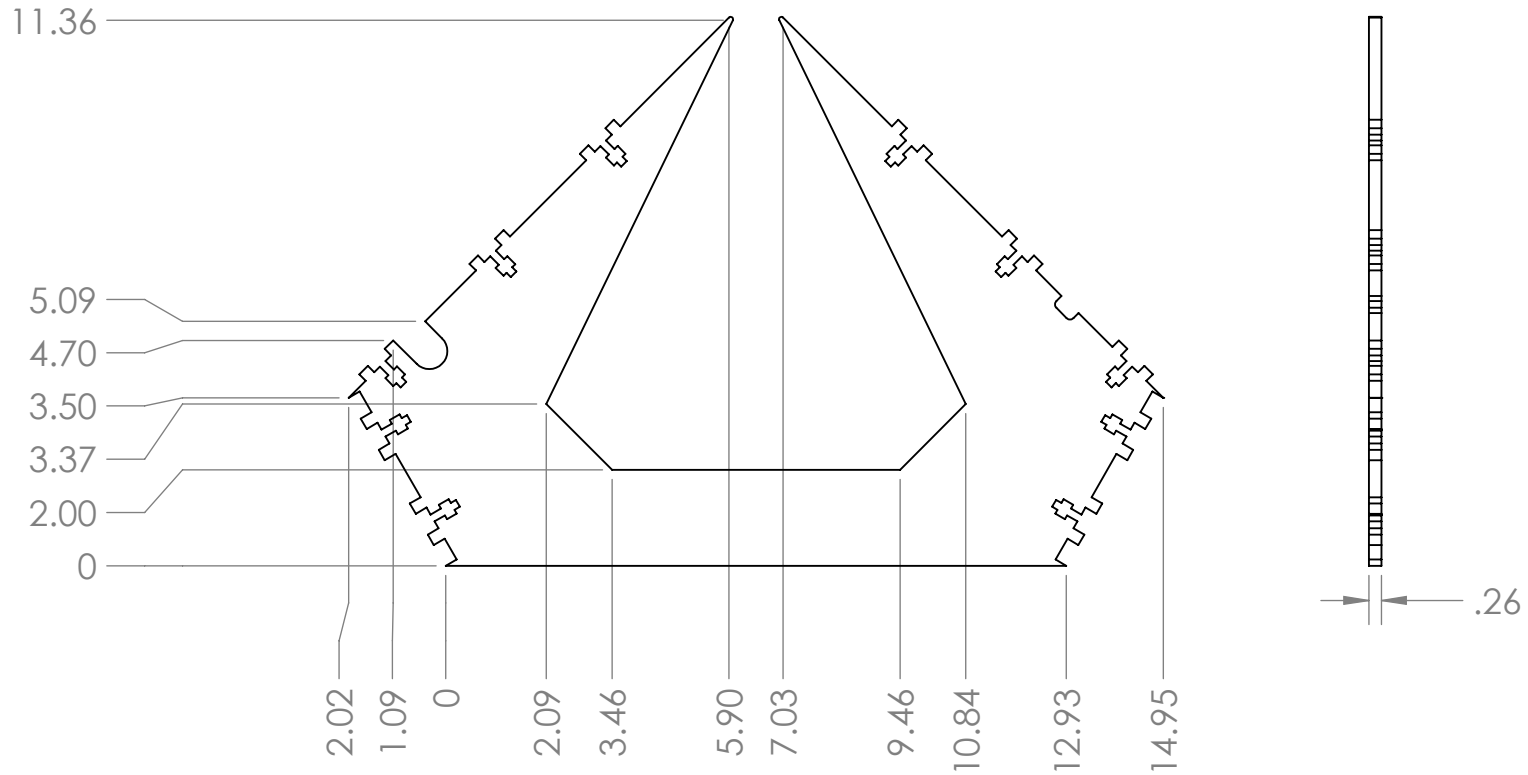
1:2

SCALE REV.

H:\ME_450\Linear Book Scanner\Fram\

FILE PATH

SIZE
A



REMOVE BURRS & SHARP EDGES

UNLESS OTHERWISE SPECIFIED:
DIMENSIONS ARE IN INCHES

TOLERANCES:
FRACTIONAL $\pm 1/32"$
ANGULAR: MACH $\pm 2^\circ$ BEND: $\pm 1/16"$
TWO PLACE DECIMAL $\pm 0.020"$
THREE PLACE DECIMAL $\pm 0.005"$

RIB 5, FRAME

DESCRIPTION

PART NO.

GROUP

ENGINEER

SHAWN WRIGHT

DRAWN BY

DATE

MATERIAL WEIGHT

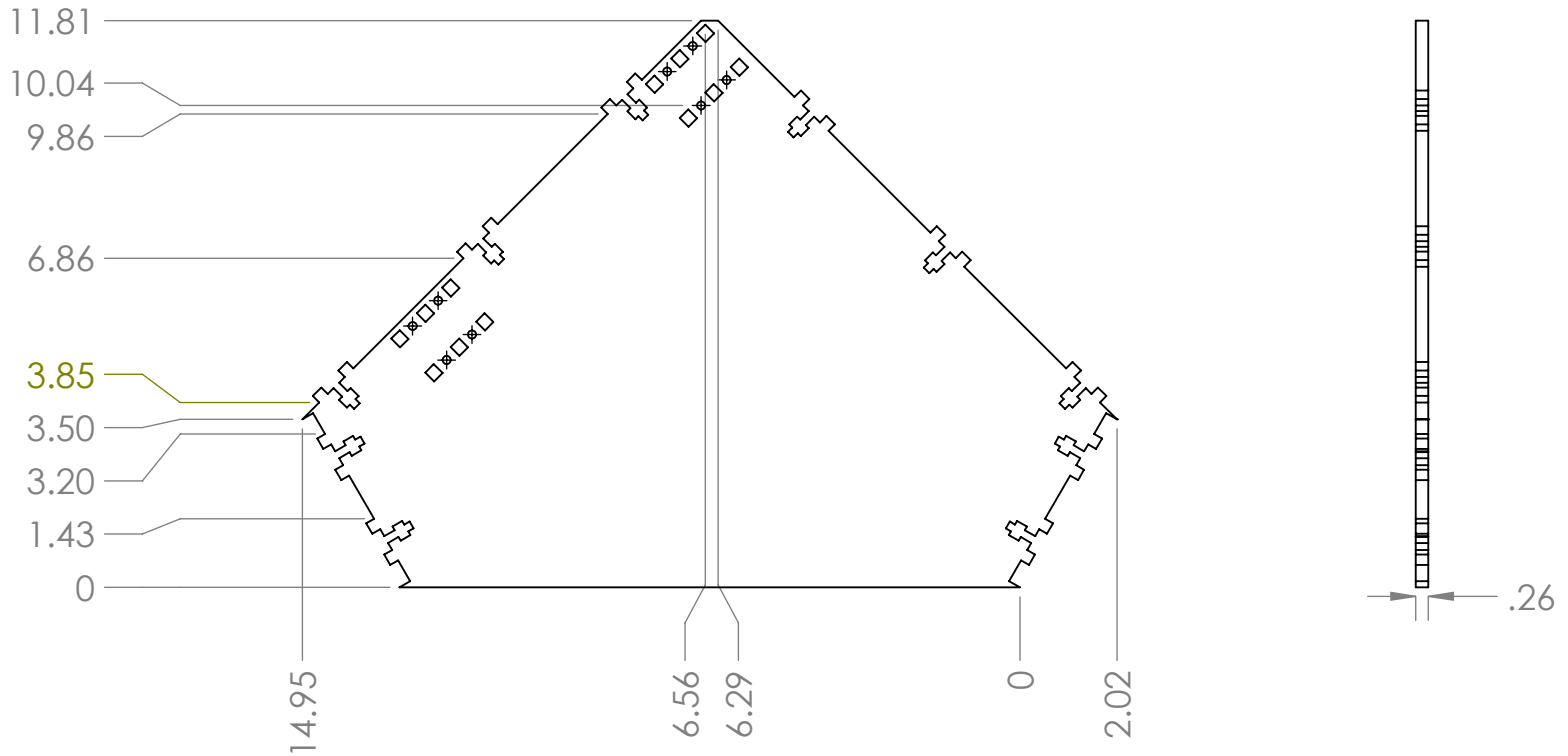
1:4

SCALE REV.

H:\ME_450\Linear Book Scanner\Fram\

FILE PATH

SIZE
A



REMOVE BURRS & SHARP EDGES

UNLESS OTHERWISE SPECIFIED:
DIMENSIONS ARE IN INCHES

TOLERANCES:
FRACTIONAL $\pm 1/32"$
ANGULAR: MACH $\pm 2^\circ$ BEND: $\pm 1/16"$
TWO PLACE DECIMAL $\pm 0.020"$
THREE PLACE DECIMAL $\pm 0.005"$

RIB 6, FRAME

DESCRIPTION

PART NO.

GROUP

ENGINEER

SHAWN WRIGHT

DRAWN BY

DATE

MATERIAL WEIGHT

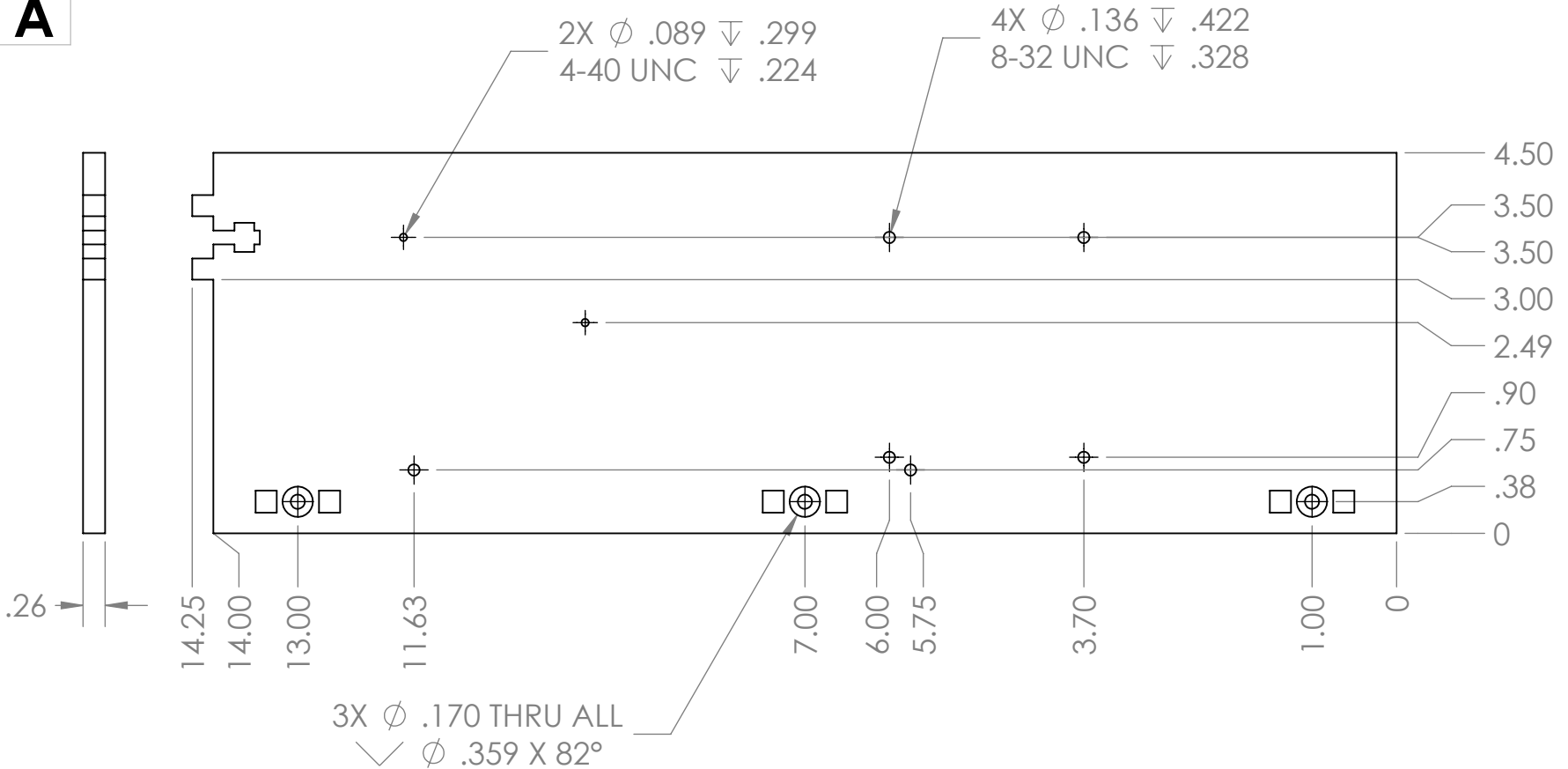
1:4

SCALE REV.

H:\ME_450\Linear Book Scanner\Fram\

FILE PATH

SIZE
A



REMOVE BURRS & SHARP EDGES

UNLESS OTHERWISE SPECIFIED:
DIMENSIONS ARE IN INCHES

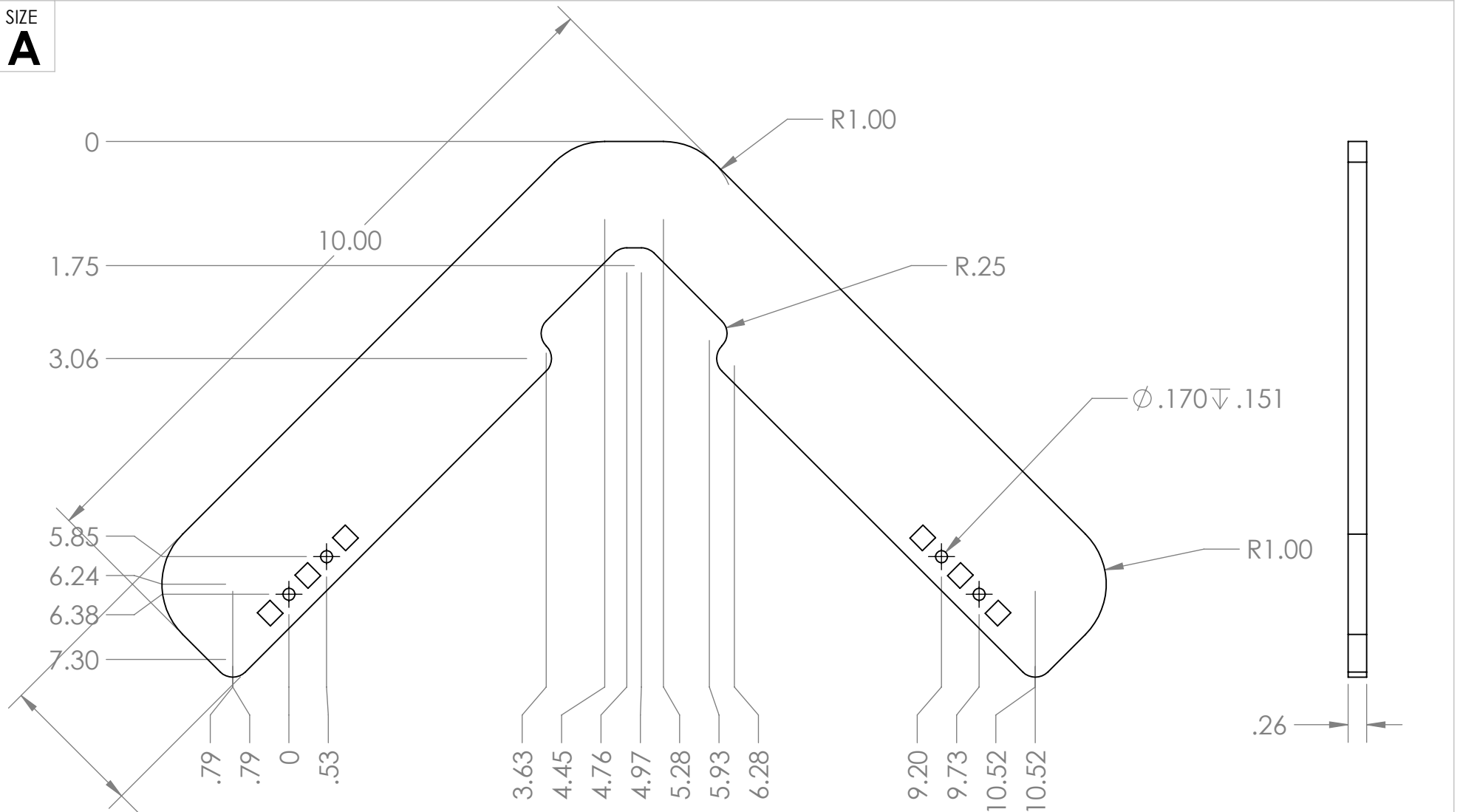
TOLERANCES:
 FRACTIONAL $\pm 1/32$ "
 ANGULAR: MACH $\pm 2^\circ$ BEND: $\pm 1/16$ "
 TWO PLACE DECIMAL ± 0.020 "
 THREE PLACE DECIMAL ± 0.005 "

SIDE INFEED, ELECTRONICS SLIDE

DESCRIPTION

| | | | |
|--|--------------|----------|------------|
| PART NO. | GROUP | | |
| ENGINEER | SHAWN WRIGHT | DRAWN BY | DATE |
| MATERIAL | WEIGHT | 1:8 | SCALE REV. |
| H:\ME_450\Linear Book Scanner\Electronics Slide\ | | | FILE PATH |

SIZE
A



REMOVE BURRS & SHARP EDGES

UNLESS OTHERWISE SPECIFIED:
DIMENSIONS ARE IN INCHES

TOLERANCES:
FRACTIONAL $\pm 1/32"$
ANGULAR: MACH $\pm 2^\circ$ BEND: $\pm 1/16"$
TWO PLACE DECIMAL $\pm 0.020"$
THREE PLACE DECIMAL $\pm 0.005"$

SIDE PADDLE, SADDLE

DESCRIPTION

PART NO.

GROUP

ENGINEER

SHAWN WRIGHT

DRAWN BY

DATE

MATERIAL WEIGHT

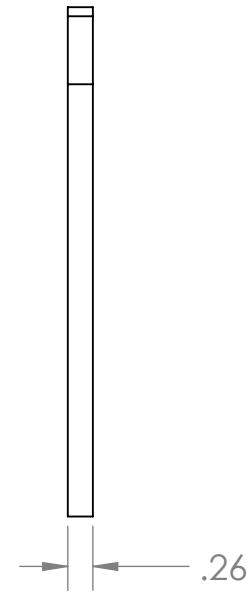
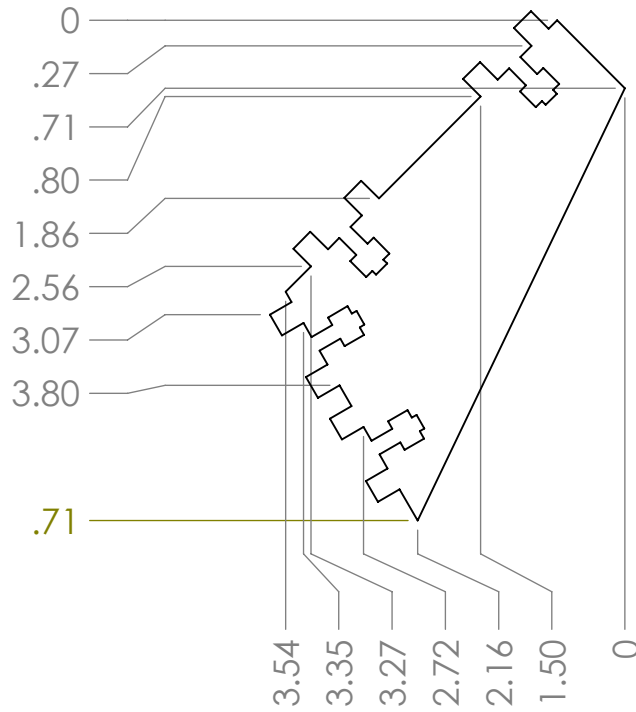
1:4

SCALE REV.

H:\ME_450\Linear Book Scanner\Saddle\

FILE PATH

SIZE
A



REMOVE BURRS & SHARP EDGES

UNLESS OTHERWISE SPECIFIED:
DIMENSIONS ARE IN INCHES

TOLERANCES:
FRACTIONAL $\pm 1/32"$
ANGULAR: MACH $\pm 2^\circ$ BEND: $\pm 1/16"$
TWO PLACE DECIMAL $\pm 0.020"$
THREE PLACE DECIMAL $\pm 0.005"$

SIDE, MOTOR MOUNT

DESCRIPTION

PART NO.

GROUP

ENGINEER

SHAWN WRIGHT

DRAWN BY

DATE

MATERIAL WEIGHT

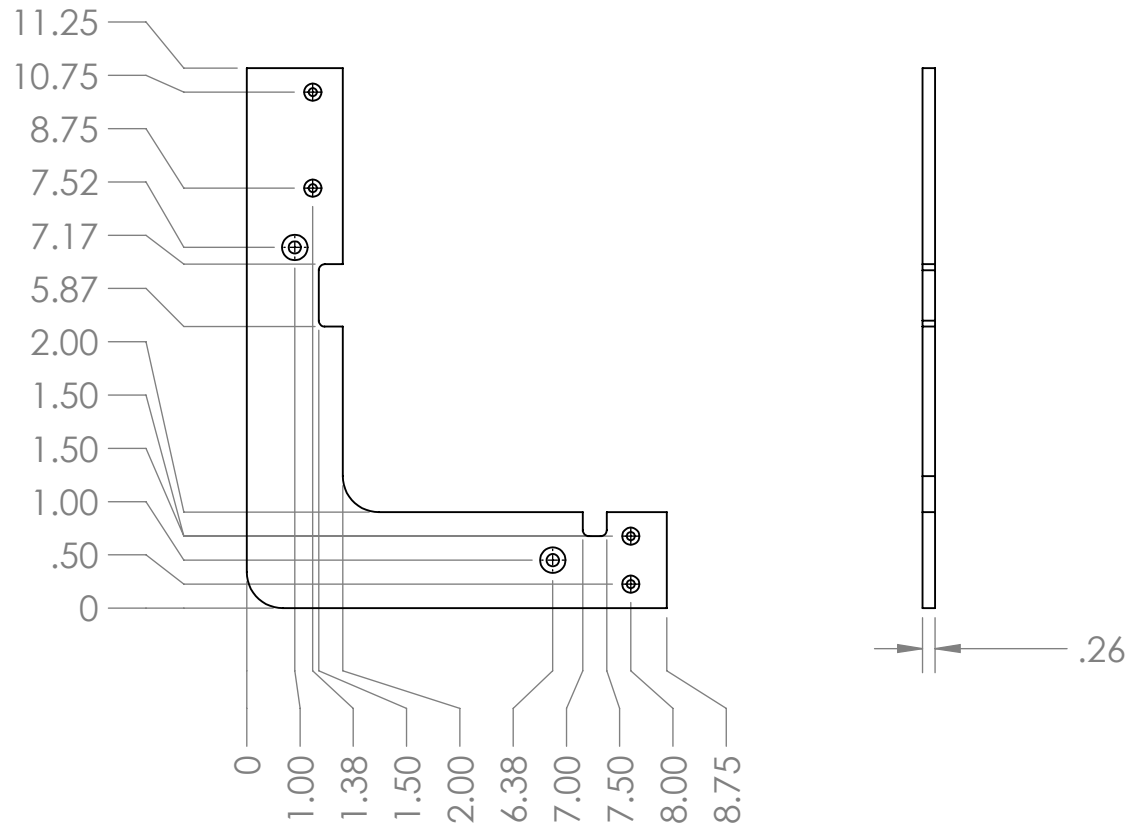
1:2

SCALE REV.

H:\ME_450\Linear Book Scanner\Motor Mount\

FILE PATH

SIZE
A



REMOVE BURRS & SHARP EDGES

UNLESS OTHERWISE SPECIFIED:
DIMENSIONS ARE IN INCHES

TOLERANCES:
 FRACTIONAL $\pm 1/32"$
 ANGULAR: MACH $\pm 2^\circ$ BEND: $\pm 1/16"$
 TWO PLACE DECIMAL $\pm 0.020"$
 THREE PLACE DECIMAL $\pm 0.005"$

SIDE_2, SADDLE

DESCRIPTION

PART NO.

GROUP

ENGINEER

SHAWN WRIGHT

DRAWN BY

DATE

MATERIAL WEIGHT

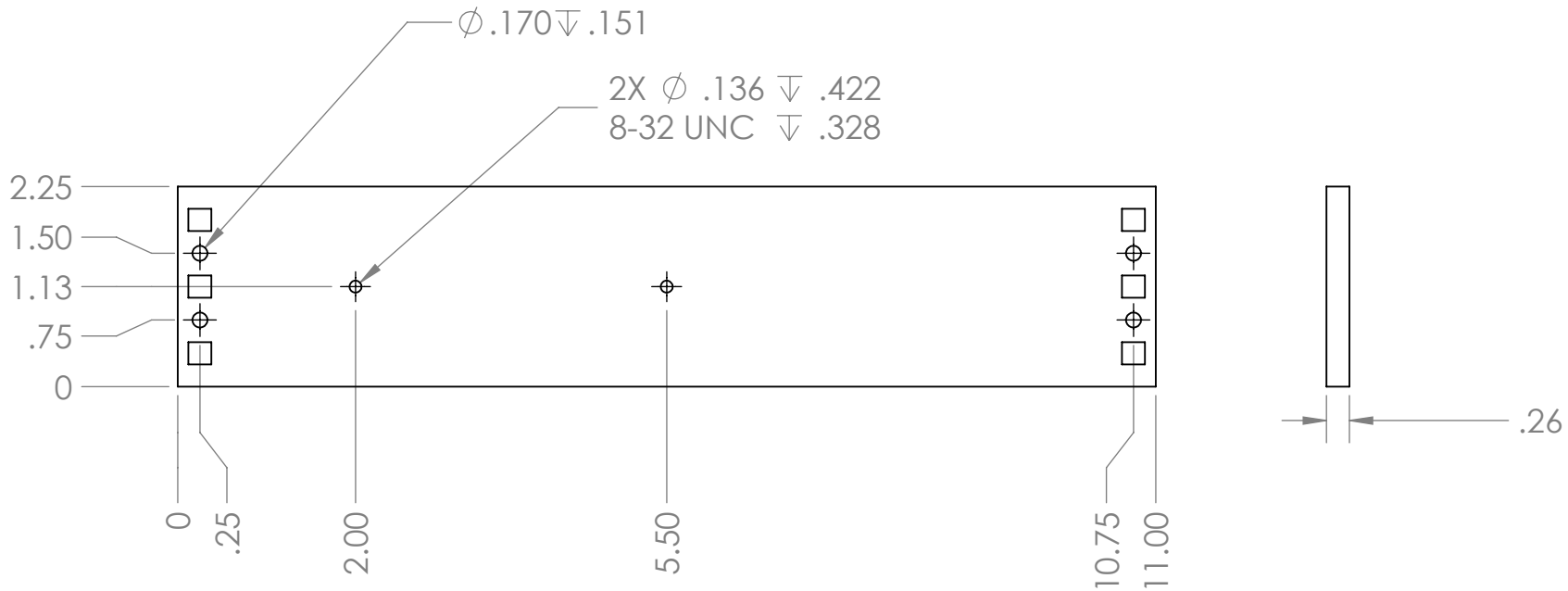
1:8

SCALE REV.

H:\ME_450\Linear Book Scanner\Saddle\

FILE PATH

SIZE
A



SLIDE MOUNT INFED, ELECTRONICS SLIDE

REMOVE BURRS & SHARP EDGES

UNLESS OTHERWISE SPECIFIED:
DIMENSIONS ARE IN INCHES

TOLERANCES:
FRACTIONAL $\pm 1/32$ "
ANGULAR: MACH $\pm 2^\circ$ BEND: $\pm 1/16$ "
TWO PLACE DECIMAL ± 0.020 "
THREE PLACE DECIMAL ± 0.005 "

| DESCRIPTION | | | |
|--|--------------|----------|------|
| PART NO. | GROUP | | |
| ENGINEER | SHAWN WRIGHT | DRAWN BY | DATE |
| MATERIAL | WEIGHT | 1:4 | REV. |
| H:\ME_450\Linear Book Scanner\Electronics Slide\ | | | |
| FILE PATH | | | |